



BATT Automatic Timer Template

Bo's Template Tamers

By Bo Schmitz

bo@comsoft7.com

© 2007 Comsoft7©

Table of Contents

Foreword	0
Part I Introduction to BATT AutoTimer	3
1 OverView.....	4
2 Whats New.....	5
3 Getting Started.....	5
4 License	5
Part II Templates	6
1 BATT Auto Timer Extension.....	7
Embeds	7
Local Data	8
2 BATTSeIAll Control.....	9
3 BATTSeIOne Control.....	10
Index	0

1 Introduction to BATT AutoTimer

BATT Big Auto Timer Template

Supports C4-C6x, Clarion and ABC.

For easy addition of timers to any procedure. Just select the embed for the timing you need.

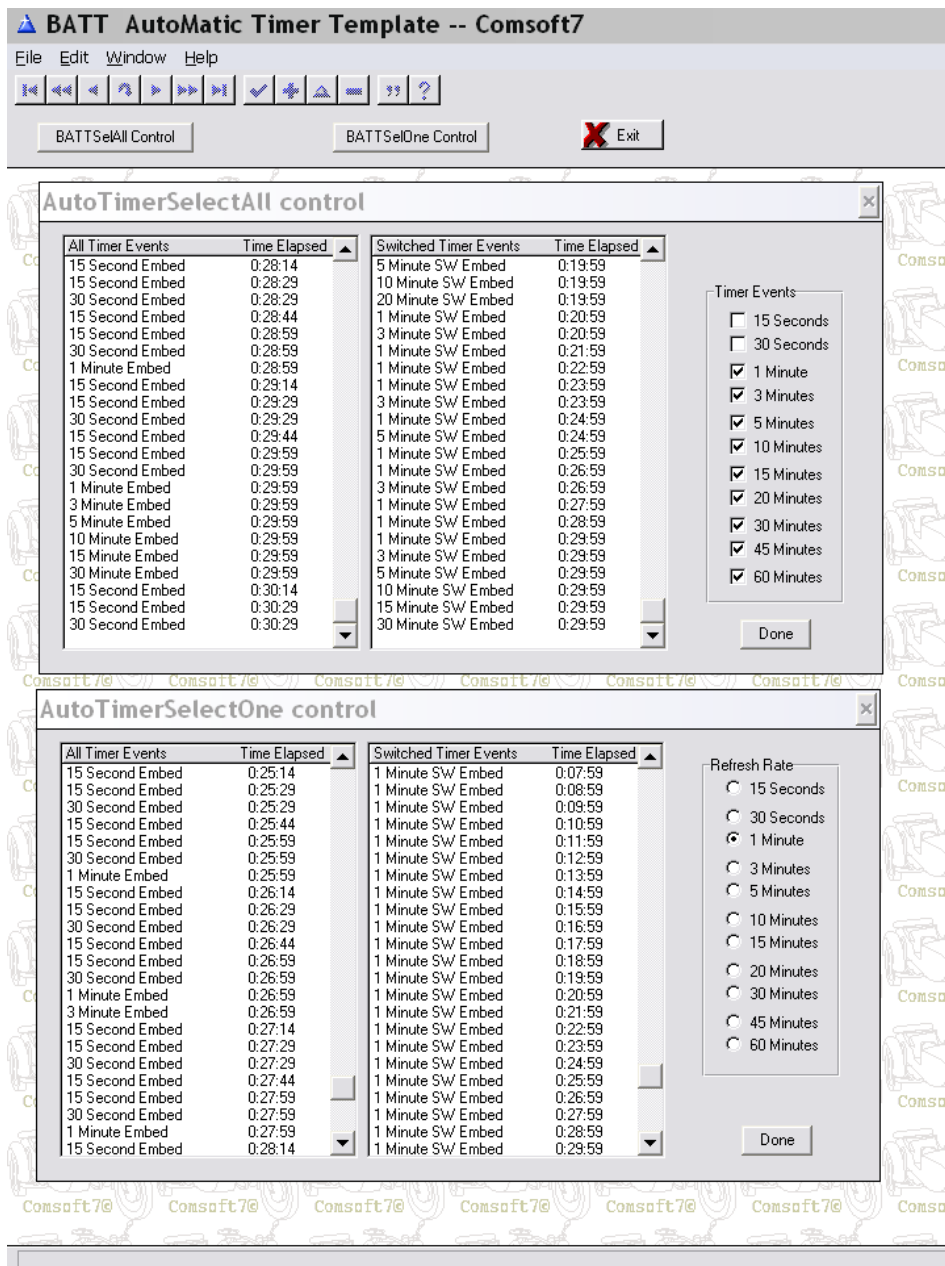
An Extension template is dropped on the procedure, and you have an instant Auto Timer with predefined embeds to enter your code.

The smallest granularity of time is 15 seconds, and common selections up to an hour are provided.

Switched embeds are also provided for the different time intervals controlled by byte variables, so those embeds are runtime controllable.

2 Runtime controls are provided:

- selector type for runtime controlling a specific event
- multiple selections type for controlling different features with different time intervals.



1.1 Overview

BATT Big Auto Timer Template

Supports C4-C6x, Clarion and ABC.

An Extension template is dropped on the procedure, and you have an instant Auto Timer with predefined embeds to enter your code.

Switched embeds are also provided for the different time intervals controlled by byte

variables, so those embeds are runtime controllable using the convenient control templates provided. Add your own as needed.

The control templates are standard clarion drop in controls, so you may modify the text, layout, design, etc as needed. You can delete the unwanted check boxes and Radio Options.

1.2 Whats New

May 5, 2007 BATT Auto Timer Ver 1.0 Released.

1.3 Getting Started

BATT couldn't make it any easier to add a timer and your code to any window.

Just Drop the extension template on a window, select the appropriate embed to add your code, and you have a timer.

Nothing to break, update, no black boxes, and drop dead simple<g>.

1.4 License

License & Copyright Notice

BATT Automatic Timer Template

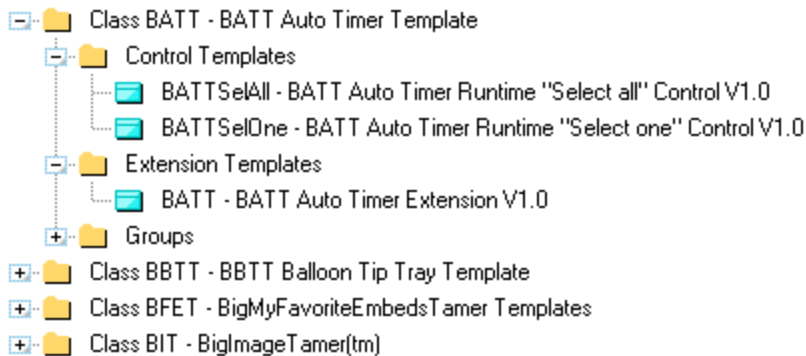
BATT Template is copyright 2003 - 2007 by Comsoft7.
None of the files included in this package may be distributed individually or in an altered state without first contacting the author.

BATT is provided without warrantee or guarantee, implied or otherwise. Use at your own risk. Using BATT implies acceptance of this agreement, along with recognition of copyright. Comsoft7 cannot be held liable for any damages or business losses, which may occur as a direct or indirect result of using BATT.

```
#! BATT Template is the intellectual property of Bo Schmitz -  
#! AKA Comsoft7 Copyright 1985-2007  
#!  
#! The author has developed all template code independently,  
#!  
#! Licensing is based on Softvelocity's - one developer can run  
#! BATT on more than one machine as long as they are the  
#! main user and it is the same copy of Clarion. The developer can  
#! run BATT on more than 1 version of Clarion as long as  
#! they are upgrades. Therefore, one license required per each
```

```
#! Softvelocity license. You can transfer the license to another
#! developer by first consulting the author.
#! Inquire the author for site license's or multiple licenses.
#!
#! Because BATT is all code, please observe the copyright.
#! I made the decision to not BlackBox BATT, and you may
#! modify it to suit your purposes. Please advise the Author of
#! any major changes, your needs, and perhaps these changes or needs
#! can be included as features.
#!
#! BATT must not be copied, or modified, in part or whole
#! (except for Personal use), or distributed to another person in
#! any way, without first Contacting the author.
#!
#! The author may be contacted by email at bo@comsoft7.com
#!
#! No warranty of any kind! Use at your own risk.
#!
```

2 Templates



There are three templates associated with BATT.

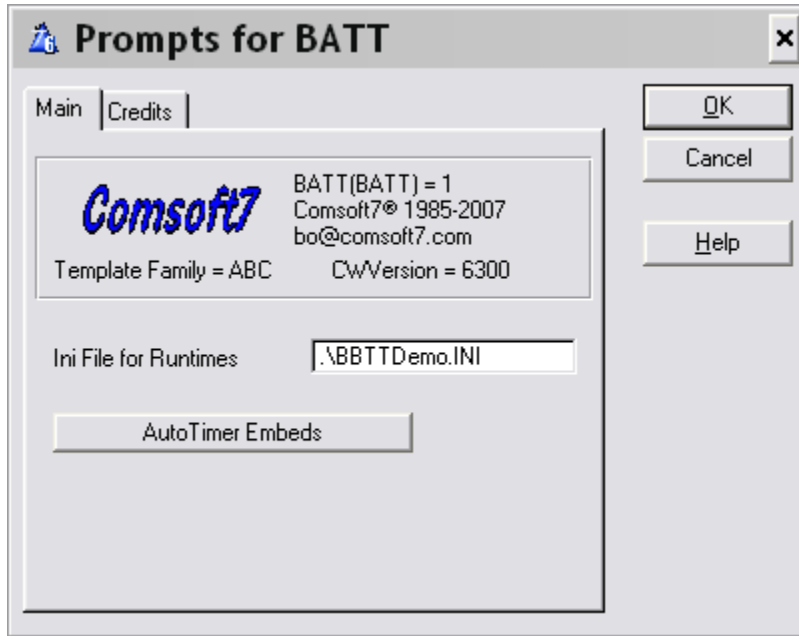
The **BATT Auto Timer Extension Template**, and **2 runtime control templates**.

BATTSelAll Control using checks to select more than one switched embed, useful for controlling different features at preset intervals.

BATTSelOne Control uses an Option control, selecting the time interval, and can place the same code in all the switched embeds making it useful for the end user to control when an event occurs.

2.1 BATT Auto Timer Extension

BATT Auto Timer Extension



The timer added to the window by BATT Auto Timer is set for 1500 or 15 seconds as the smallest time interval.

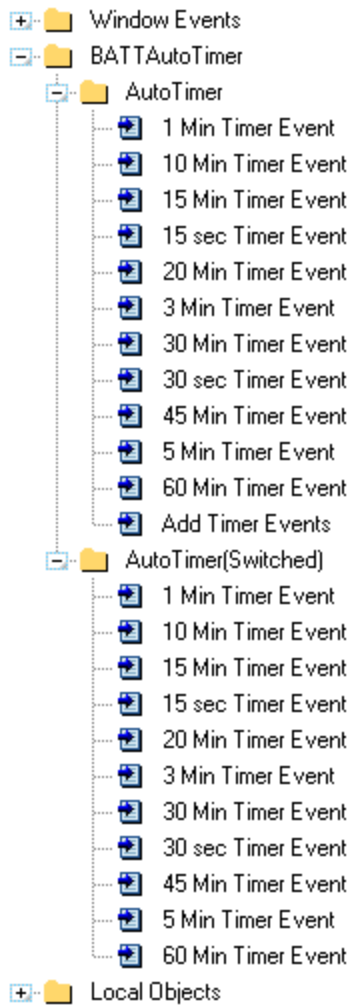
The default ini is set to the directory containing the exe, and is named '%APPLICATION & '.INI'

It is only used if you add a BATT control template and select the Preserve in INI options.

It automatically adds the timer, embeds, and Local Data for switching the switched embeds.

2.1.1 Embeds

The following embeds are created by BATT Auto Timer Template



There are 2 sets of almost identical embeds:

the first set fires whenever the timer event occurs

the second set is **switched**, and will only fire when a byte is set in the local data.

2.1.2 Local Data

The following local data is added by the BATT Auto Timer Extension Template.

BS:TCnt	LONG - FOR TIMER [15sec,Minutes,Hours,ToTal]
BS:TF15s	BYTE
BS:TF30s	BYTE
BS:TF1m	BYTE
BS:TF3m	BYTE
BS:TF5m	BYTE
BS:TF10m	BYTE
BS:TF15m	BYTE
BS:TF20m	BYTE
BS:TF30m	BYTE
BS:TF45m	BYTE
BS:TF60m	BYTE
BS_TF	BYTE

BS:TCnt is a LONG,DIM(4) and holds the time counts. [15sec,Minutes,Hours,Total or Elapsed time]

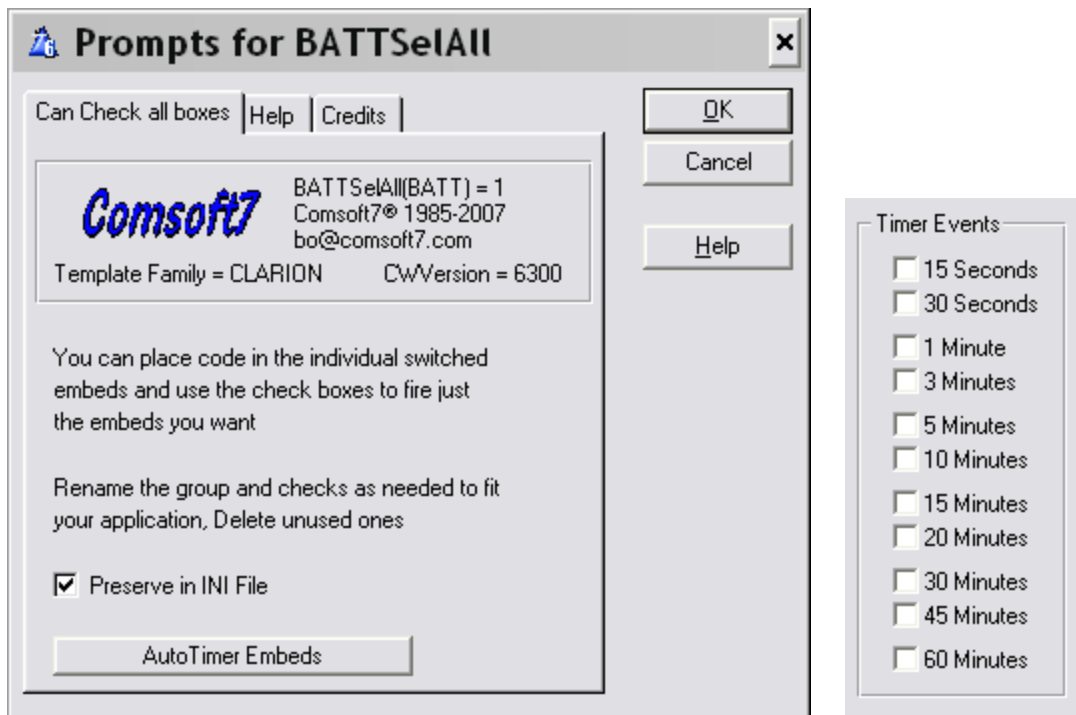
BS:TCnt[1] holds numbers 1,2,3, or 0 when a minute passes. It counts the 15 sec intervals.

The timer added to the window by BATT is set for 1500 or 15 seconds as the smallest time interval.

The rest of the BYTE's are set 0 or 1 to switch the embeds on or off to fire code. They are cunningly named to represent the time interval upon which they will fire the embeds.

2.2 BATTSeIAll Control

BATT Auto Timer Runtime "Select all" Control

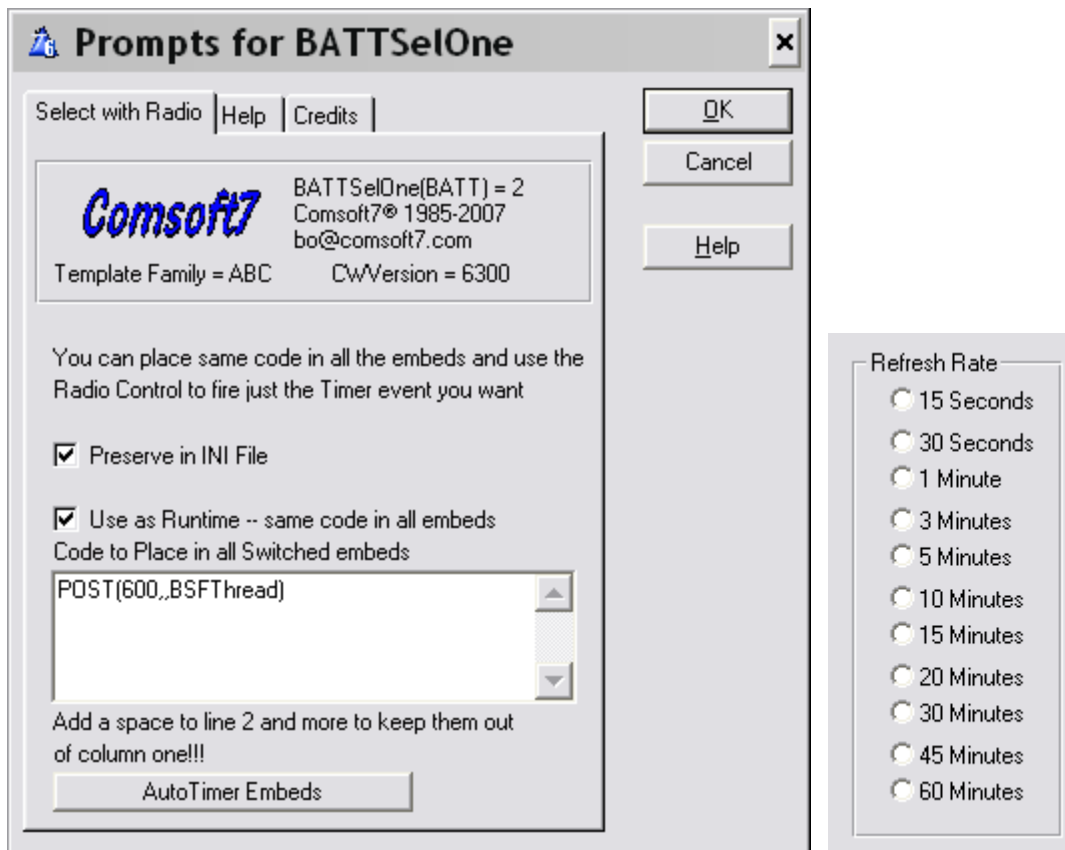


BATT Auto Timer Runtime "Select all" Control is a Group with check's for the bytes in local data used to change the "Switched" embed points on and off for runtime control. You can safely delete the ones you don't need, resize, rename as needed, etc. Salt to taste.

Preserve in INI File checkbox will save the values of the Local Data Bytes, and load them back next time the procedure is run again.

2.3 BATTselOne Control

BATT Auto Timer Runtime "Select one" Control



BATT Auto Timer Runtime "Select one" Control Is an Option control with Radio's. All the Radios have Values assigned to them, so they can be deleted, renamed, hidden, etc as needed. The template offers to place the same code in all the switched embeds so the runtime control acts as a "select Time Refresh rate control". Check the **Use as runtime** check, and code you place in the text box will be imbedded into all the switched embeds for you. Care must be taken when adding linefeeds and carriage returns to the text box, as they will allow code to go in column 1, so add spaces if you use multiple lines of code for column 1. See note below.

BS_TF BYTE is added to local data and used by the control. This is also saved to the ini file when the **Preserve in INI File** checkbox is used.

NOTE: Use care adding this control, as it takes over control of all the switched embed bytes for events. It clears all but the selected event.

NOTE: When using a carriage return or linefeed in the text box, you must add a space to the beginning of the next line to avoid the code being placed in column 1 in the app, as the compiler will complain.<g>