



Big Image Tamer Templates

© 2005 ... Comsoft7

Bo Schmitz

Table of Contents

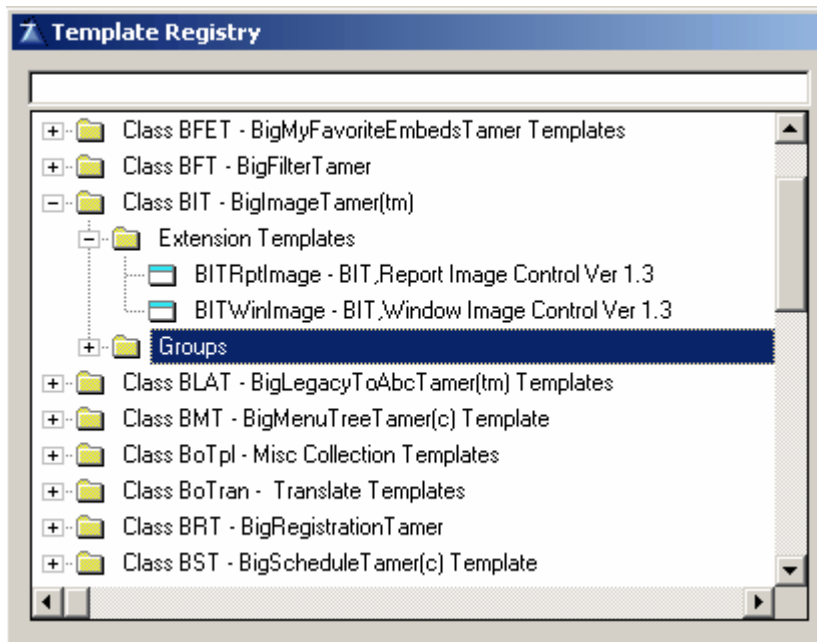
Foreword	0
Part I Big Image Tamer Templates	2
1 BITWinImage Browse	3
2 BITWinImage Form	4
3 BITRptImage	6
4 Misc Converting to ABC	7
5 License	8
6 Whats New	9
Index	0

1 Big Image Tamer Templates

BIT Big Image Tamer

Supports C4-C6x, Clarion and ABC.

BigImageTamer Template set contains 2 **multi use** Extension templates, **BITWinImage** and **BitRptImage**. These can be applied **as many times as necessary** to control images used on windows and reports.



BigImageTamer Templates take the variable file name selected in the prompt, assigns it as {PROP:TEXT} to the image control selected in the drop down box, and recalculates the width and height proportionately to fit inside the image control as you placed it on the window. It will place the resized picture in the upper left hand corner of the image control unless you tell it otherwise. Additional BITWinImage(tm) features include a checkbox to center the image in the designated image control, assign it to a browse box to autorefresh as the browse is scrolled, or to autorefresh if used on a form with a dos lookup button. See the BITWin template image included in the demo. New checkboxes have been added to allow choices to not scale smaller images to a larger size, and to allow a choice of positioning fo Top Left, Top Right, Bottom Left, and Bottom Right for the image in the Image control area defined.

If used on a form with lookup button, select the button use variable in the dropdown prompt. **BITWinImage** will assign the prompt to automatically replace and resize the image as new file name selections are made.

If the image control is used on a Browse, select the browse use variable in the

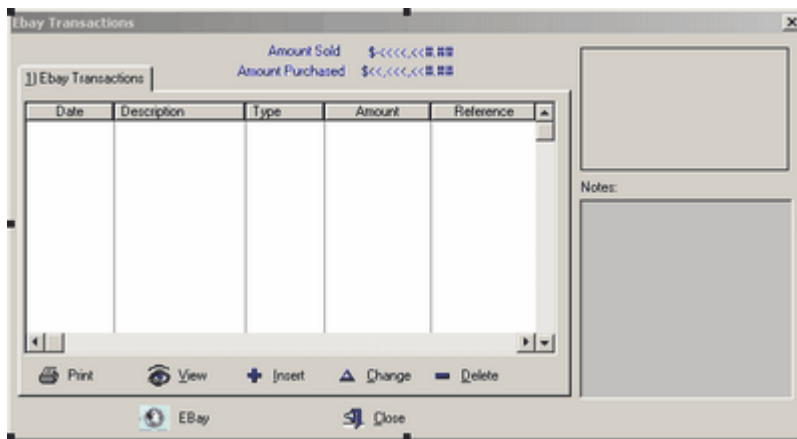
dropdown prompt. **BITWinImage** will assign the prompt to automatically replace and resize the image as new selections are made in the browse.

BitRptImage is similar to the window template. Just assign the image control in the dropdown, select the file and field name used for the image, and select the center option if you want to use it. The image will be resized proportionately to fit in the image control. Apply to as many images, logos, watermarks, etc. that you need on a report. This works great for variable logos stored in a configuration file as well as variable inventory pictures or images changing with each detail.

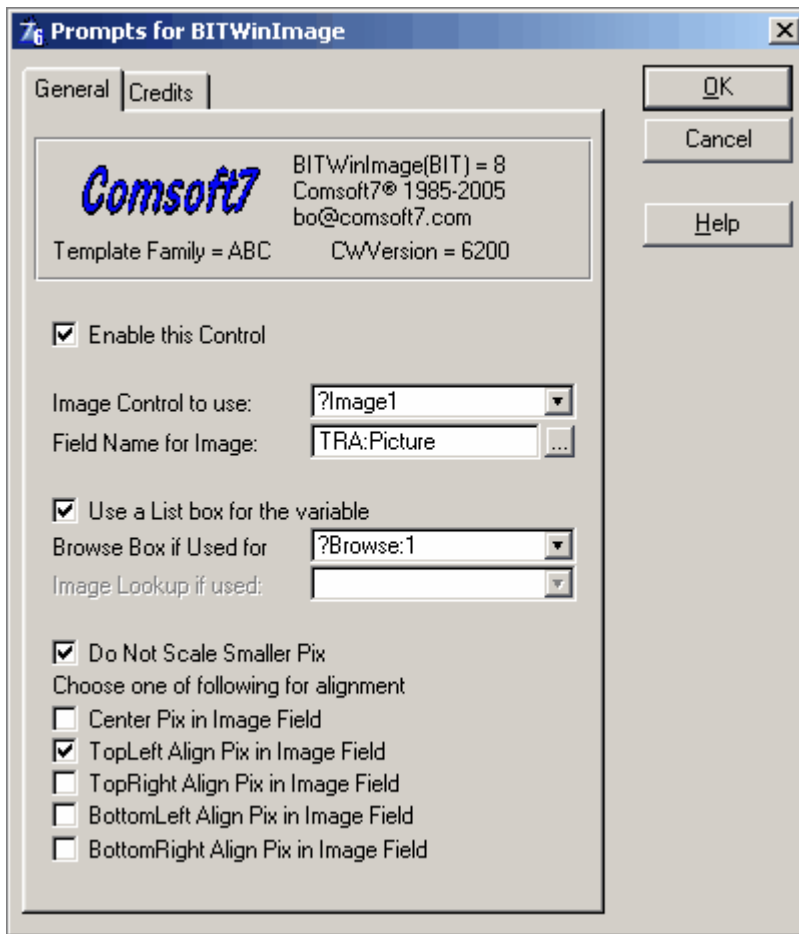
1.1 BITWinImage Browse

On a Browse using Filename from a Field in the Browsed File to Display.

Sample Window with Browse and Image control.



Add the BitWinImage Extension Template, and setup as follows.



1. Select the **Image Control to use** from the dropdown box.
2. Select the **Field Name for Image** from the Browsed File.
3. Check the Box to **Use a List box for the variable**
4. Select the **Browse/List Box if Used for**
5. Check **Do Not Scale Smaller Pix** if you do not want to enlarge smaller images.
6. Choose an alignment Schema for the Displayed image when it does not fill the Image area completely.

That's it, compile and run<g>.

1.2 BITWinImage Form

On a Form with Lookup to Select Image to display.

Sample Form with Variable File name Field and Image Lookup Button and Image Control.

Form Ebay Transactions

1) Ebay Transaction

Date: ?

Description:

Reference:

Type

Money In

Payed Out

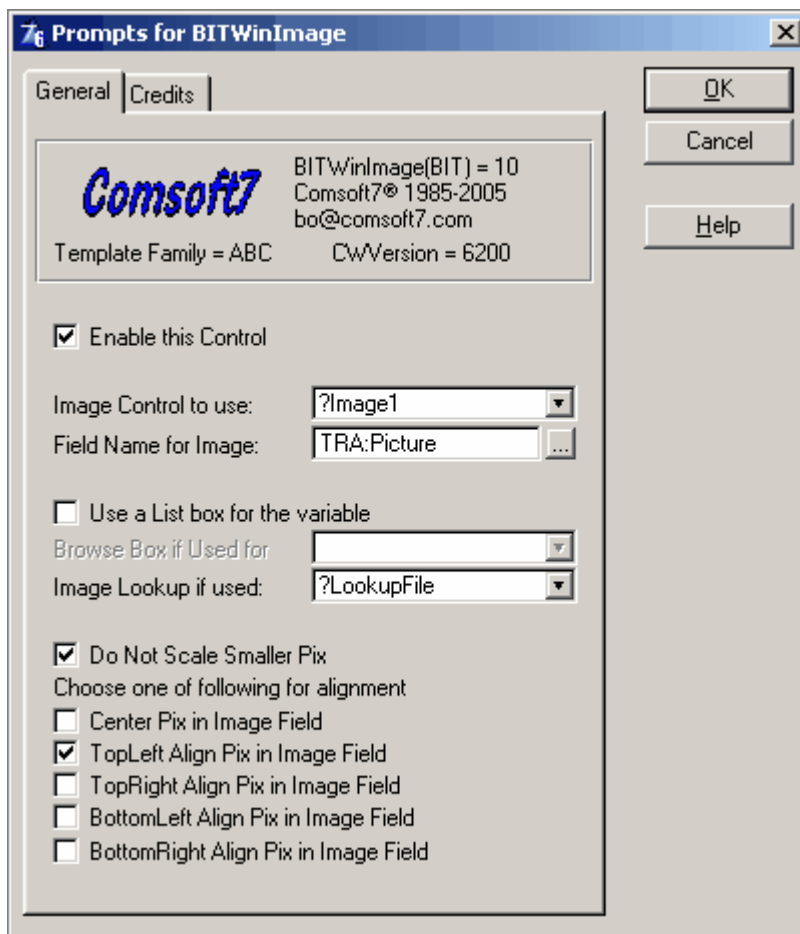
Amount:

Picture: ?

Notes:

OK Cancel

Add the BitWinImage Extension Template, and setup as follows.



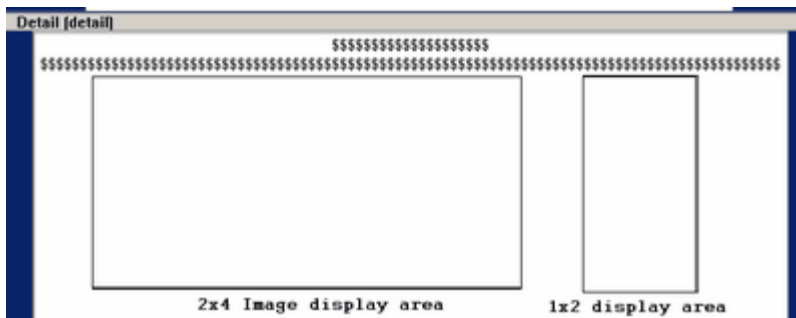
1. Select the **Image Control to use** from the dropdown box.
2. Select the **Field Name for Image** from the Browsed File.
3. Select the **Image Lookup if Used** (Lookup Button assigned to Image File Name Field)
4. Check **Do Not Scale Smaller Pix** if you do not want to enlarge smaller images.
5. Choose an alignment Schema for the Displayed image when it does not fill the Image area completely.

Thats it, compile and run<g>.

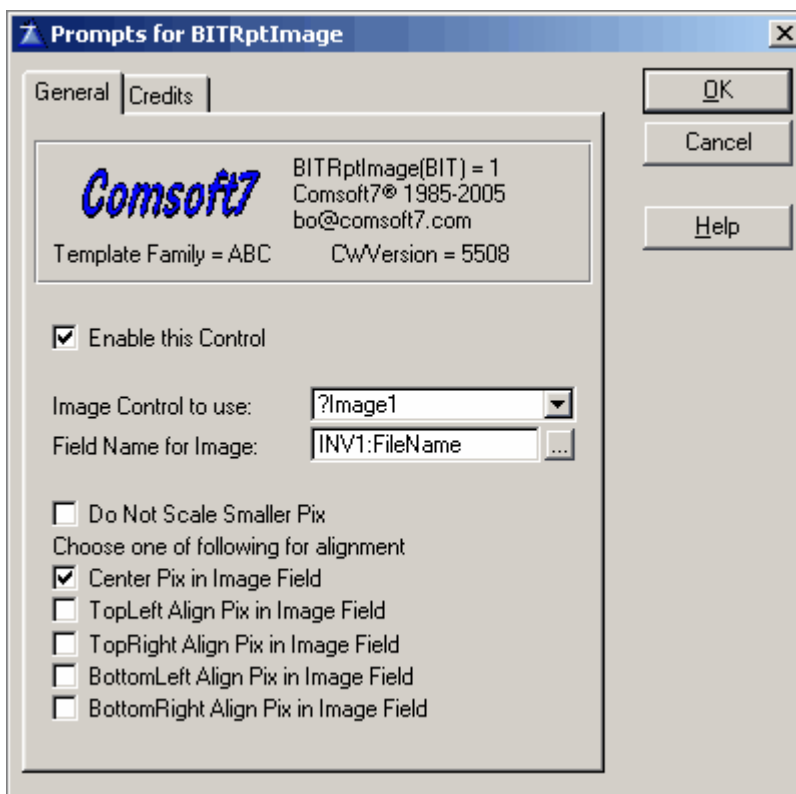
1.3 BITRptImage

On a Report with Image Loaded from FileName in the Detail.

Sample Report Layout.



Add the BitWinImage Extension Template, and setup as follows.



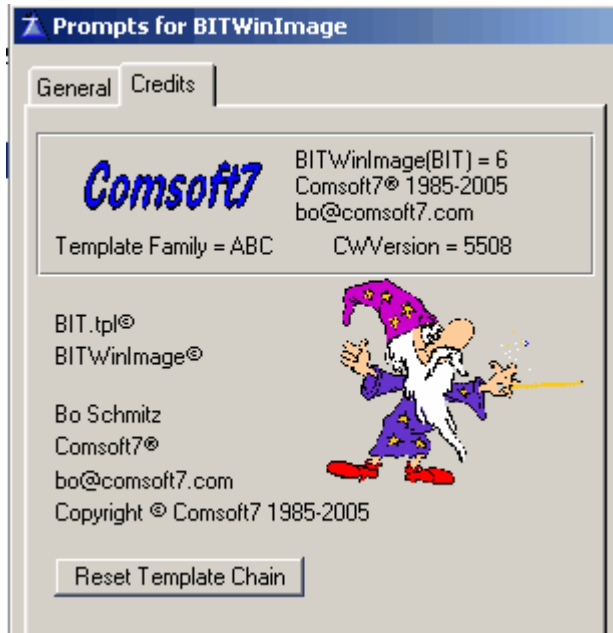
1. Select the **Image Control to use** from the dropdown box.
2. Select the **Field Name for Image** from the Report File.
3. Check **Do Not Scale Smaller Pix** if you do not want to enlarge smaller images.
4. Choose an alignment Schema for the Displayed image when it does not fill the Image area completely.

Thats it, compile and run<g>.

1.4 Misc Converting to ABC

When converting/Migrating from Legacy or Clarion templates to ABC, the templates will remember the old template chain, and you need to click on the Reset Template Chain Button

to reset the code used by BIT for generating the proper code.



1.5 License

License & Copyright Notice

BigImageTamer(tm) Template is copyright 2005 by Comsoft7. None of the files included in this package may be distributed individually or in an altered state without first contacting the author.

BigImageTamer(tm) is provided without warrantee or guarantee, implied or otherwise. Use at your own risk. Using BigImageTamer(tm) implies acceptance of this agreement, along with recognition of copyright. Comsoft7 cannot be held liable for any damages or business losses, which may occur as a direct or indirect result of using BigImageTamer(tm).

```
#! BigImageTamer(tm) Template is the intellectual property of Bo Schmitz -
#! AKA Comsoft7 Copyright 1985-2005
#!
#! The author has developed all template code independently,
#!
#! Licensing is based on Softvelocity's - one developer can run
#! BigImageTamer(tm) on more than one machine as long as they are the
#! main user and it is the same copy of Clarion. The developer can
#! run BigImageTamer(tm) on more than 1 version of Clarion as long as
#! they are upgrades. Therefore, one license required per each
#! Softvelocity license. You can transfer the license to another
#! developer by first consulting the author.
#! Inquire the author for site license's or multiple licenses.
#!
#! Because BigImageTamer(tm) is all code, please observe the copyright.
```

#! I made the decision to not BlackBox BigImageTamer(tm), and you may
#! modify it to suit your purposes. Please advise the Author of
#! any major changes, your needs, and perhaps these changes or needs
#! can be included as features.
#!
#! BigImageTamer(tm) must not be copied, or modified, in part or whole
#! (except for Personal use), or distributed to another person in
#! any way, without first Contacting the author.
#!
#! The author may be contacted by email at bo@comsoft7.com
#!
#! No warranty of any kind! Use at your own risk.
#!

1.6 Whats New

Ver 1.3 June 5, 2005

Added positioning and Do not Scale Small Images support.
Moved embeds to get rid of flicker on procedure init

Ver 1.2 March 3, 2005

Added CPCS Support

Ver 1.1 Jan 29 2003

Added support for C6x