



**Bo's Template
Tamers**

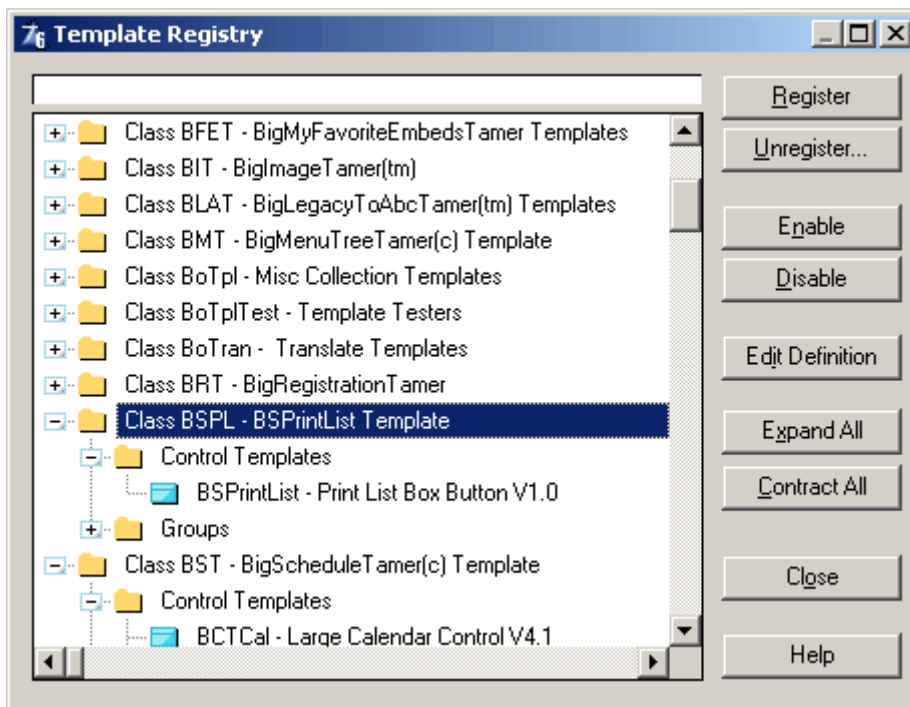
By Bo Schmitz

© <1985-2005> ... Comsoft7

Table of Contents

Foreword	0
Part I BPL	2
1 What BPL Does	2
2 BPL Does Not Do !!!!!	3
3 How To Use	4
4 Report Outputs	8
5 Whats New	13
6 Contact Us	13
Index	0

1 BPL



Installing and registering the BPL template shows up in the registry as the Class BSPL BSPrintList Template. BSPrintList is a control template that drops a print button on the window that can be configured to print a listbox on the window.



BSPrintList was developed primarily as a way to generate [WYSIWYG reports for the BST template Listboxes](#) and works with other listboxes as well, but has some limitations with other listboxes. See [BPL Does Not Do](#).

[How to use](#)

1.1 What BPL Does

BPL makes it easy to generate a report on a listbox and queue, using the format of the listbox and currently loaded queue to give you a WYSIWYG report.

BPL uses Landscape or Portrait Reports.

BPL can split wide lists into 2 equal lists.

BPL can carry up to 2 fixed column(s) across the split lists.

BPL auto calculates column widths.

BPL can double the width of column 1 for readability or wide data field.

BPL auto calculates font sizes.

BPL can use colors if you use them in all fields. Only on text.
 BPL allows you to add a Header to the report using strings or variables.
 BPL supports IceTips Previewer.

1.2 BPL Does Not Do !!!!!

BPL currently prints only the data stored **in the current queue** of a listbox. On a **page loaded listbox it does not print all available data** in the file. Only the data visible on the screen in the current queue. See [Report Outputs](#).

BPL does not recognize Styles.

BPL cannot print icons on reports.

BPL can only use colors if they are used on all the fields.

BPL only supports colors with text, not empty cells with color duration in schedulers.

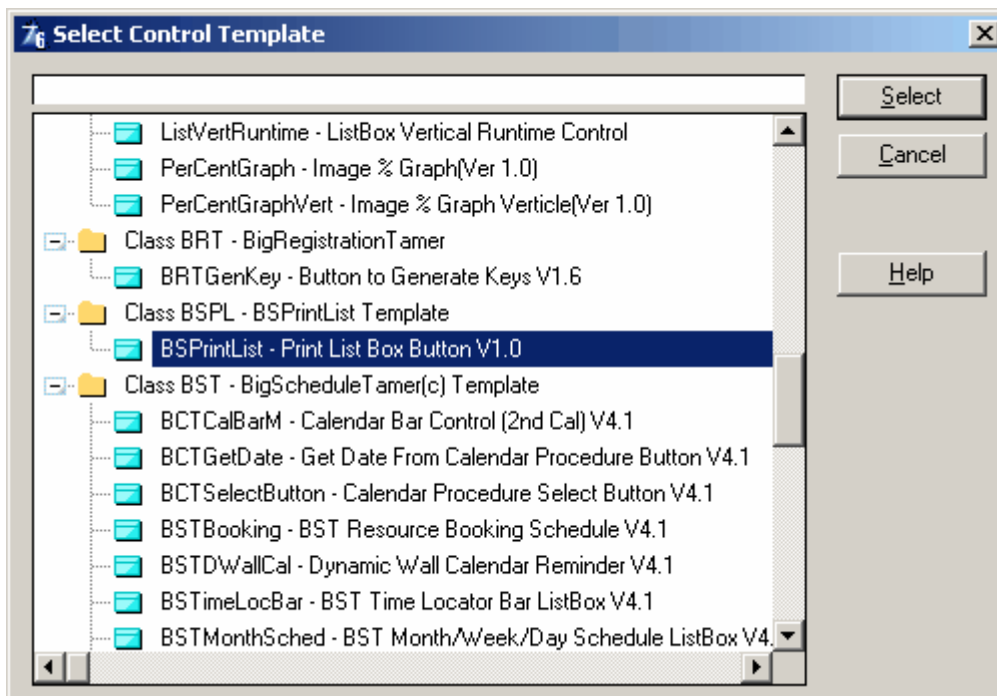
BPL does not print the 2nd Line of group headers, or the data contained in the extra lines of the listbox related to those groups. This is a limitation of using a listbox on a report. Notice that Phone Number is missing in listbox header and in the output.


Sys Id	Emp Id	Emp	Date	Time	Duration	Contact	Customer Id	Address Phone Number
2	3	498	NOV 10,2004	1:00PM	60	Howard Johnson's In	10	3812 Sheppard Cr 4042561253
3	2	605	MAR 6,2004	2:00PM	60	AT&T	4	45 NW 35th Street 5612845359
4	2	605	MAR 6,2004	11:15AM	60	BellSouth	5	45 Merry Road 5613241234
5	2	605	MAR 6,2004	1:00PM	15	Channel 7 News	6	67 Old England Ro 9542349876
6	3	498	MAR 6,2004	2:45PM	60	Channel 7 News	6	67 Old England Ro 9542349876
7	3	498	MAR 6,2004	7:00AM	60	Channel 7 News	6	67 Old England Ro 9542349876
13	2	605	MAR 6,2004	6:00AM	60	Encore Computers	2	150 E. Sample Roa 9547854555

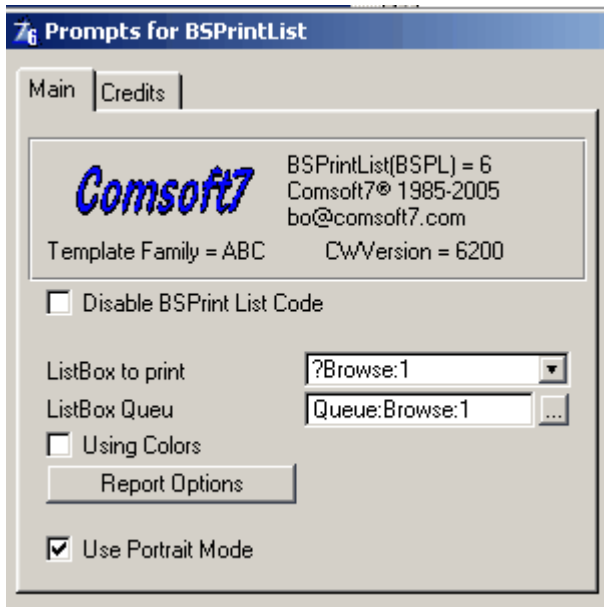
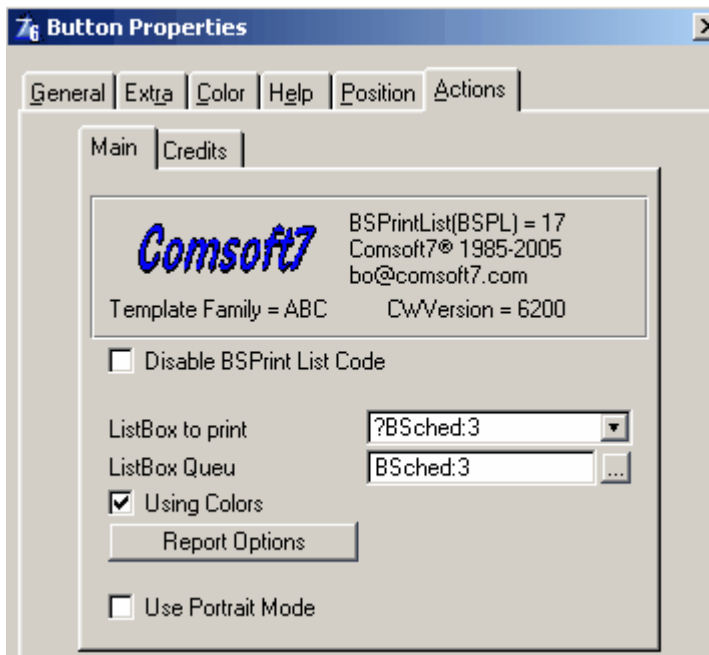
Sys Id	Emp Id	Emp Date	Time	Duration	Contact	Customer Id	Address	Apprnt Type
2	3	498 NOV 10, 2005	1-00PM	60	Howard Johnson's	10	3812 Sheppard C	
3	2	605 MAR 6, 2005	2-00PM	60	AT&T	4	45 NW 35th Stre	
4	2	605 MAR 6, 2005	11-15AM	60	BellSouth	5	45 Merry Road	
5	2	605 MAR 6, 2005	1-00PM	15	Channel 7 News	6	67 Old England R	
6	3	498 MAR 6, 2005	2-45PM	60	Channel 7 News	6	67 Old England R	
7	3	498 MAR 6, 2005	7-00AM	60	Channel 7 News	6	67 Old England R	
13	2	605 MAR 6, 2005	6-00AM	60	Encore Computers	2	150 E. Sample R	
14	4	605 MAR 6, 2005	6-00AM	60	Univest Telecom	4	6042 Sheppard C	

1.3 How To Use

While on your window with the list box, select control template, and then select The PrintListBox.



Place the  button where you want it, right click on it, select **Actions**, and fill out the prompts required by the template.



Disable BSPrint List Code will disable all code generation by the templates if you need this for debugging.

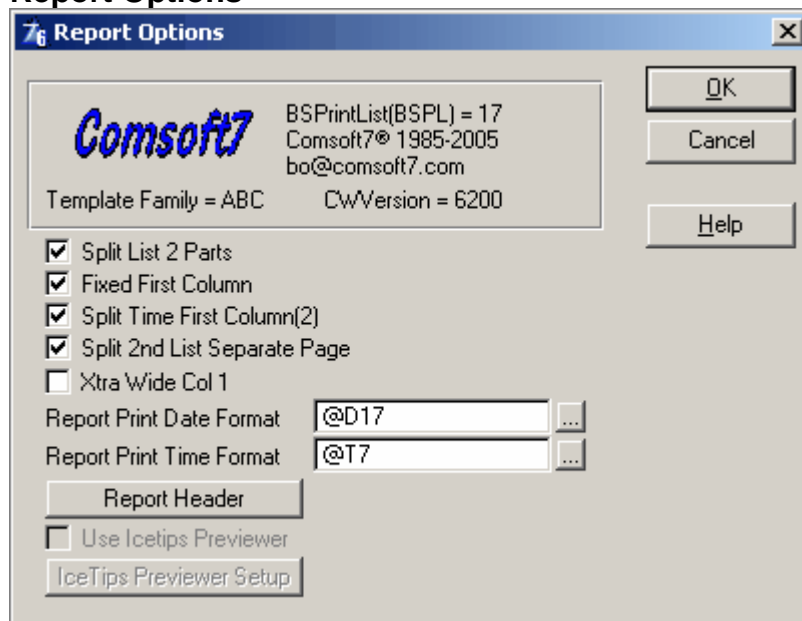
Listbox to print is a drop list to select the Listbox you wish to print.

ListBox Queu is the queu used by the listbox. For [BST Listboxes](#), this is the Listbox less the "?". For [ABC listboxes](#) it is usually the Listbox name without the "?" appended to "Queue:" aka = Queue:Browse:1 There is a lookup button if you have the queu defined in the local data.

Using Colors is a checkbox to use colors and works well when you have colors on all the list box fields, as is the case often in BST templates. [Use this with caution](#), as it gets real funky if you don't have colors specified in the listbox. This may not be a wise choice if your users don't have color printers as well. The colors do not print on empty cells that are used for duration. It only prints them [when there is text to print](#).

Use Portrait Mode is a checkbox that changes the report to Portrait Mode. The default is Landscape. Use this with narrow lists to save paper, and when the automatic font and list sizing doesn't get too small to read or blow off the page. Some times the list print outputs look better splitting the list and using portrait mode versus Landscape. Depends on how you are using it.

Report Options



Split List 2 Parts will split the listbox into 2 equal parts, allowing the fonts to be larger, and more information to be displayed in the resulting report.

Fixed First Column is for Split Lists where you want to repeat the first column in the second half of the list box, like a fixed column for scrolling purposes.

Split Time First Column(2) is primarily for [BST Listboxes that have a Split Time column](#), and Fixes the first 2 columns as in the checkbox above. It will repeat the first 2 columns in the second half of a split list box.

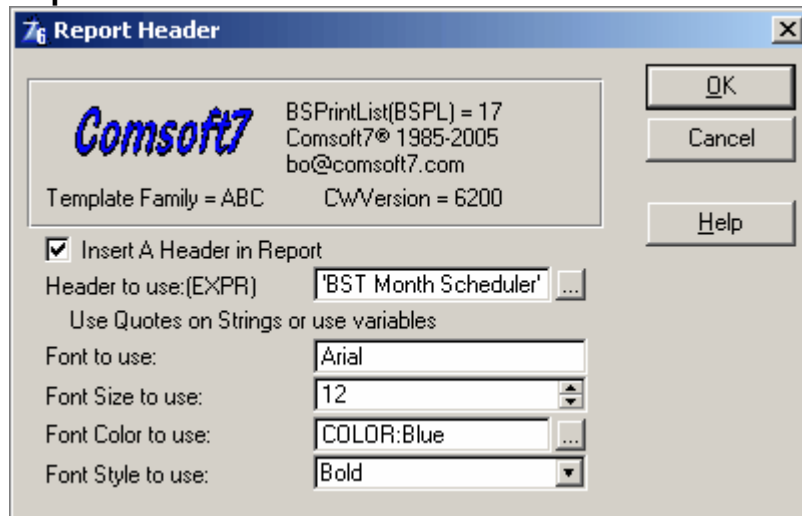
Split 2nd List Separate Page is for adding an [ENDPAGE\(Report\)](#) to the last detail printed of the first half of the list. This allows for appending the lists together for readability when printing long lists of data. Default is OFF, as short lists will put the second half of wide lists on the bottom half of the same page.

Xtra Wide Col 1 is for doubling the width in column 1 on the report, for seeing more or all of the data in column 1 when it gets resized according to the total width of the list box.

Report Print Date Format changes the format on the date printed on the report. (Today)

Report Print Time Format changes the format of the current time printed on the report.

Report Header

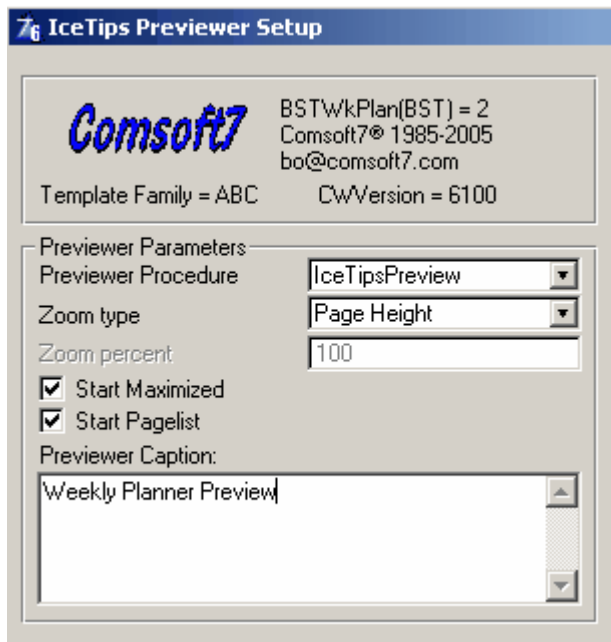


Insert A Header in Report enables the rest of the prompts for adding a Header Line to the report.

Header to use:(EXPR) is an expression prompt allowing you to build the Header using variables from your procedure or constants that you enclose in quotes. The **Font prompts** are pretty much self explanatory.

Use Ictips Previewer is a checkbox that is enabled if the global templates are visible from IceTips previewer. Checking this box enables the following setup Button.

IceTips Previewer Setup



Prompts here are used for the IceTips Previewer, and are covered in their help file.

1.4 Report Outputs

Example of report output of [BST BizDay Booking template](#), with split list on landscape, allowing 2nd half of list to print on same page of the report output.

Report Preview

File View Zoom

Page: 1 Across: 1 Down: 1 Zoom: Tile pages

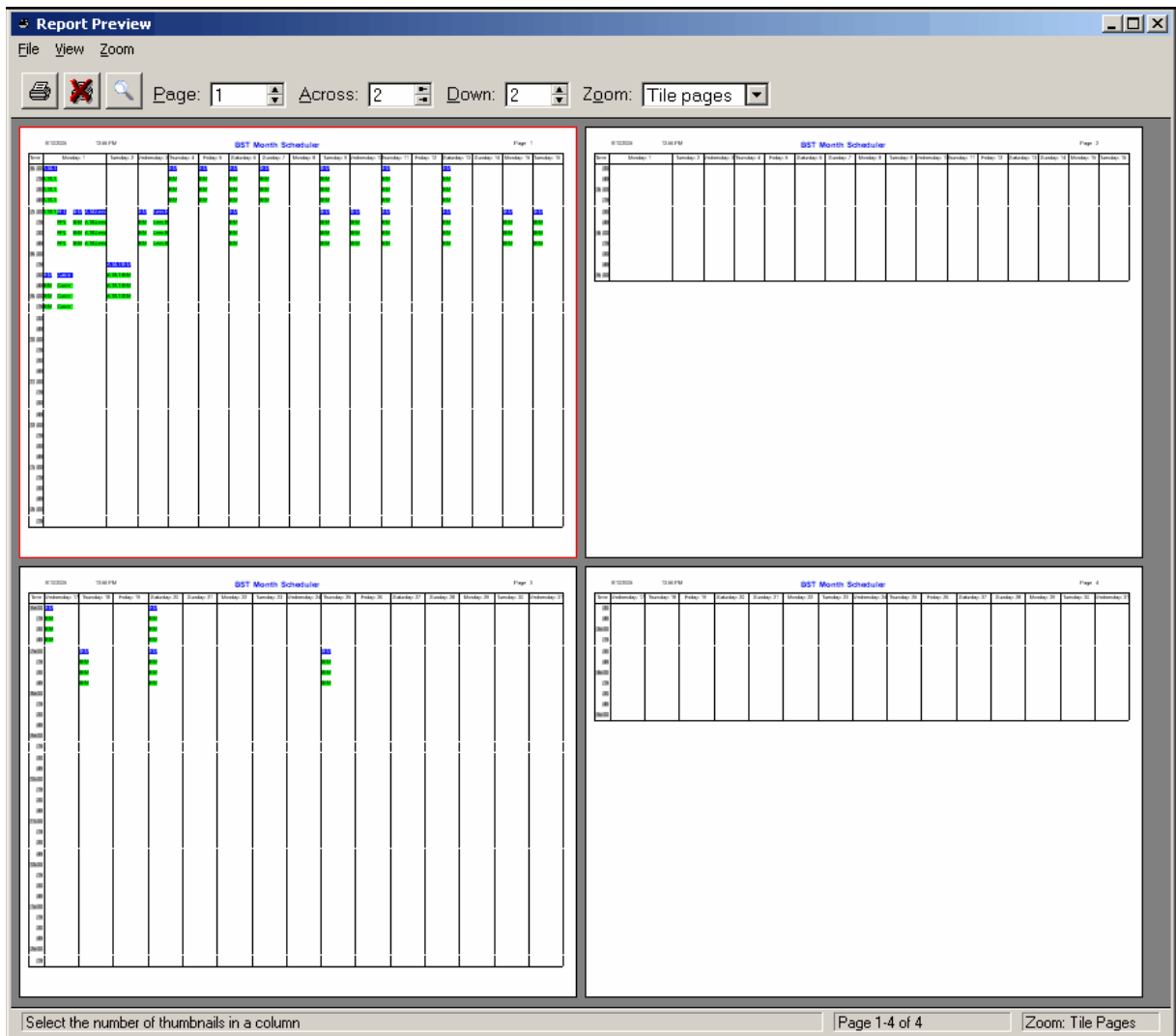
9/10/2005 1:00 PM **BizDay Bookings** Page: 1

Resource	5:00 PM	6:00 PM	7:00 PM	8:00 PM	9:00 PM	10:00 PM	11:00 PM	12:00 AM	1:00 AM	2:00 AM	3:00 AM	4:00 AM
Technical Support Rep			7:00 PM	11:00 PM	IBM							
Sales Engineer						10:00 PM	1:00 AM	BCC				
Sales Agent	5:00 PM	10:00 PM	Lenz Epr									
Assistant Manager												
Consulting												
Director Of Marketing												
Technical Support Manager	3:00 PM	11:00 PM	FPL									
Assistant Manager 2												
Customer Service Rep												

Resource	5:00 AM	6:00 AM	7:00 AM	8:00 AM	9:00 AM	10:00 AM	11:00 AM	12:00 PM	1:00 PM	2:00 PM	3:00 PM	4:00 PM	5:00 PM
Technical Support Rep													
Sales Engineer													
Sales Agent													
Assistant Manager													
Consulting													
Director Of Marketing													
Technical Support Manager				7:00 AM	8:00 AM								
Assistant Manager 2													
Customer Service Rep													

Page 1 of 1 Zoom: Tile Pages

Example of the [BST Month Scheduler](#) with split list, and 'Split 2nd List Separate Page' selected so the output pages can be lined up for easier readability.



1st Page showing autofomat of the output as BPL picks up the conflict columns and time format changes at runtime.

Report Preview

File View Zoom

Page: 1 Across: 1 Down: 1 Zoom: Tile pages

9/10/2005 3:42 PM Multiple Resource Daily Scheduler Page: 1

Time	Technical Support Manager	Assistant Manager	Customer Service Rep	Consulting	Assistant Manager	Sales Engineer	Director of Marketing	Technical Support	Sales Agent
5am :30									
:45									
6am :00	AT&T								
:15	AT&T								
:30	AT&T								
:45	AT&T								
7am :00	AT&T	FPL IBM AT&T Lexis E			IBM				
:15		FPL IBM AT&T Lexis E			IBM AT&T				
:30		FPL IBM AT&T Lexis E			IBM AT&T BCC				
:45		FPL IBM AT&T Lexis E			IBM AT&T BCC				
8am :00		AT&T Lexis E				AT&T BCC			
:15						BCC			
:30	IBM	Cable T							
:45	IBM	Cable T							
9am :00	IBM	Cable T							
:15	IBM	Cable T							
:30									
:45									
10am :00									
:15									
:30									
:45									
11am :00									
:15									
:30									
:45									
12pm :00									
:15									
:30									
:45									
1pm :00									
:15									
:30									
:45									

Page 1 of 2 Zoom: Tile Pages

Example of Appointment Data printed from **ABC file loaded listbox**, showing all records in file in 24 page portrait report not using colors.

Report Preview

File View Zoom

Page: 1 Across: 1 Down: 1 Zoom: Page Width

9/10/2005 2:52 PM **First Tab Appointment Data** Page 1

Sys Id	Emp Id	Emp Date	Time	Duration	Contact	Customer Id	Address	Appmnt Type
2	3	498 NOV 10, 2004	1-00PM	60	Howard Johnson's	10	3812 Sheppard C	
3	2	605 MAR 6, 2005	2-00PM	60	AT&T	4	45 NW 35th Stre	
4	2	605 MAR 6, 2005	11-15AM	60	BellSouth	5	45 Merry Road	
5	2	605 MAR 6, 2005	1-00PM	15	Channel 7 News	6	67 Old England R	
6	3	498 MAR 6, 2005	2-45PM	60	Channel 7 News	6	67 Old England R	
7	3	498 MAR 6, 2005	7-00AM	60	Channel 7 News	6	67 Old England R	
13	2	605 MAR 6, 2005	6-00AM	60	Encore Computers	2	150 E. Sample Ro	
14	4	605 MAR 6, 2005	6-00AM	60	Univest Telecomm	4	6043 Sheppard C	

Page 1 of 24 Zoom: Page Width

Example of **Page loaded listbox**, where it will only print what is on the window you are looking at, the visible records are printed. The 2 examples are printed from the top and bottom of the view of the records.

Report Preview

File View Zoom

Page: 1 Across: 1 Down: 1 Zoom: Page Width

9/10/2005 3:02 PM **Daily Bookings for Week and Month** Page 1

Res Id	Start Date	Duration	Customer Id	Display Contact	Booking Type	Notes
2	4/28/2004	6	14	Lens Express		
2	4/28/2004	0				
3	5/01/2004	3	14	Lens Express		
4	5/01/2004	5	11	FPL		
5	5/02/2004	7	7	Life Plus		
2	5/04/2004	2	8	BCC		
1	5/06/2004	3	10	Howard Johnson's Inn		
2	5/07/2004	7	6	Channel 7 News		
3	5/08/2004	3	12	Burdines		
1	5/09/2004	3	5	BellSouth		
5	5/10/2004	4	3	IBM	1	
4	5/10/2004	2	13	Cable TV Of Margate		
1	5/12/2004	8	1	Sun Sentinel		

Set zoom to standard or user defined value Page 1 of 1 Zoom: Page Width

Report Preview

File View Zoom

Page: 1 Across: 1 Down: 1 Zoom: Page Width

9/10/2005 3:04 PM **Daily Bookings for Week and Month** Page 1

Res Id	Start Date	Duration	Customer Id	Display Contact	Booking Type	Notes
3	8/04/2004	2	11	FPL		
5	9/04/2004	3	4	AT&T		
2	9/04/2004	3	11	FPL		
4	9/04/2004	2	3	IBM		
1	9/04/2004	2	5	Bell South		
3	9/06/2004	2	3	IBM		
3	11/03/2004	4	5	Bell South	Rent	
3	5/14/2005	4	3	IBM		
3	5/18/2005	3				
3	5/21/2005	1				
5	8/29/2005	6	9	AT&T		
3	9/01/2005	11	3	IBM		
2	9/01/2005	3	11	FPL		

Set zoom to standard or user defined value Page 1 of 1 Zoom: Page Width

1.5 Whats New

September 10, 2005 BLP Ver 1.0 released.

1.6 Contact Us

[Contact Bo](#)

bo@comsoft7.com

[Website](#)

http://www.comsoft7.com

[Purchase](#)

http://www.comsoft7.com/Prices.htm