



**Bo's Template
Tamers**

By Bo Schmitz

© 1985 - 2005 ... Comsoft7

Table of Contents

Foreword	0
Part I Introduction to BRT	3
1 OverView	4
2 General Registration Security	5
3 Getting Started	6
4 FAQ	7
5 Under The Hood	7
6 Whats New	8
7 License	9
Part II BRT Information	9
1 File Structures	10
Reg File	10
Seats File	10
2 BRT Applications	11
BRTRegMan	11
BRTSeats	15
Invoice Example and Demo	17
3 BRTWindow	18
Part III Templates	19
1 BRAppReg - Global	20
Multi-DLL	22
Settings	23
Records Limit	23
Warning Messages	25
Settings	26
Company Info	28
Files	29
Seats	29
Records Limit	30
Dated Warnings	31
Levels	31
Branding	31
Eval/Demo Mode	32
Warning Messages	33
Use My Procedure	35
2 BRTFrame - Frame Extension	36
Sample Docs	38
Embeds	42
3 BRTLimits - Extension	43
Record Limit	43
Controls	45

Embeds	45
4 BTRRegButton - Button	46
5 BRTGenKey - Button	47
GenKey Window	48
6 BRTBrand	50
7 BTRResetSeats	51
Reset Window Main	51
 Index	 0

1 Introduction to BRT

BRT or Big Registration Tamer.

Supports C5 -C6, ABC and Clarion Chains.

BRT is for registering your apps and does not do Login Security.

Easy to set up, use, manage, and is secure.

BRT Has a self documenting feature. This puts all your BRT Security settings for the app into a text file for your information and review, greatly speeding up development time when Limiting Procedures, Controls, and Records based on Mode of operation or Registered Feature Levels.

BRT is rich in features.

1. Easy to understand and use.(Big Registration Tamer)
2. C5 thru C6 supporting both the Clarion and ABC template chains.
3. Multi-DLL support.
4. Example apps in C5 Clarion and C55 ABC.
5. Extensive Documentation.
6. No DLL's to get updated with each Version change (all source included).
7. Optional Evaluation/Demo Mode.
8. Optional Timeout if Eval/Demo Mode is selected.
9. Default Mode when not in Eval/Demo Mode or Actively Registered.
10. Optional Support for Network Seats.
11. Optional Support for Feature Registration Levels (0-9, 9 being highest)
12. Optional Subscription AKA Expiration Date Time Out Registration Key
13. Optional Date Tamper Check (For Computer Set Back)
14. Optional Number of Days Registration Key is valid.
15. Key suffix and Prefix, Seed(1-9999), and 3 encryption Methods."Example Key CS7-1740-3499-OEM"
16. Uses BRTWindow for Messages and Nag Screen (Developer access in *.clw file)
17. BRTWindow has Optional built in website and Register (Email) support.(Hidden if not filled in)
18. All Messages Used by BRTWindow are Developer configurable.
19. Branding supported.
20. Record Limit on Multiple Files based on Eval/Demo or Default Mode.
21. Procedure reject based on Feature Level and Modes.
22. Unlimited Controls Hide/Disable based on Feature Level and Modes.
23. "Document The Settings" Button to create text file with all of the above<seg>.
24. Embed points for adding your own Features and Limitations.
25. BRTRegMan.exe for generating keys with Send Key Email (button) to the customer.
26. Application Key generation Specifications are stored with the product(Application) in BRTRegMan.
27. Customer Info stored right in BRTRegMan along with keys you generate.(Optional)
28. "BRTGenKey button template" - "Free Hand" or Pre-Loaded Key Generation
29. "BRTRegButton template" Turns your Registration File Form into a "registration form" .
30. ALL SOURCE shipped with BRT in templates and apps and *.clw files. Salt to Taste.

Source for BRTRegMan sold separately. (C55 ABC app)

BRT is PDS or Pretty Darn Secure

It is highly recommended that you read the section on [General Registration Security](#).

BRT comes with all the source in the templates and *.clw files.

No DLL's to ship.

No contacting vendor(Me<seg>) each time a new version of Clarion is released.

All Files and Security Code is exposed for your development.

All files, dictionaries, Registration Manager (BRTRegMan.exe), Example apps are shipped with the templates.

Source for BRTRegMan sold separately. (C55 ABC app)

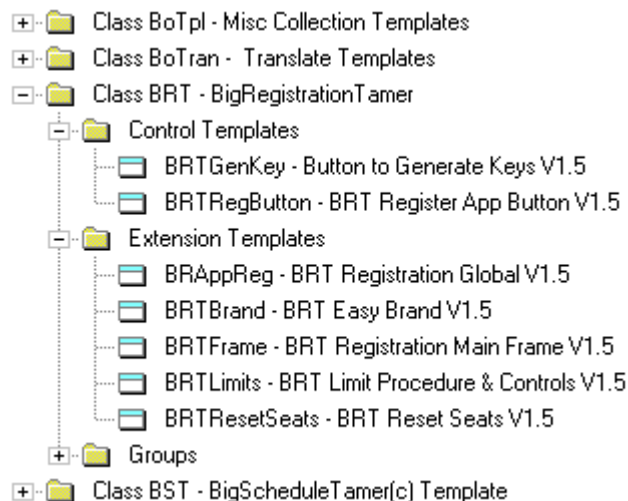
Salt to taste, or use as they are.

See the [Overview Section](#) and [Getting Started](#)

Contact Author bo@comsoft7.com

comsoft7.com

1.1 Overview



Main App templates

BRAppReg - Global Extension

BRAppReg sets up the Global variables, selects features, encryption variables, and sets the warning messages used by the rest of the application templates. BRAppReg contains Multi-dll selection information to control code generation in BRTFrame for key checking. BRAppReg contains encryption variables used by BRTRegButton to register the app.

BRTFrame - Procedure Extension

BRTFrame will generate the Key checking code on startup and network seats if these items are selected in the BRAppReg and this app is standalone, or part of a Multi-dll app and is the main app. BRTFrame also contains the Self-Documenting Feature (Button) of BRT to document the Registration settings for the application.

BRTLimits - Procedure Extension

BRTLimits is the main "Cripple or Limiting" feature of BRT. BRTLimits allows you to reject procedures, limit records, and change the properties of Window Controls (Hide, disable, etc) depending on Registration "mode" and Feature levels selected in BRAppReg.

BRTBrand - Procedure Extension

BRTBrand creates a LOC:BRTBrand variable @s50 Containing your "Default Not Registered String" Or the Company Name from the Registration file When the app is Properly Registered with a valid Key. This can be used for branding windows and reports to encourage Registration.

BRTRegButton - Control Template (For Registration file update Form)

BRTRegButton automatically turns the form into a single record update form, and will only write to the Registration file if the Key information entered is valid and successful using encryption modes

and features from BRAppReg.

Accessory Templates

BRTGenKey - Control Template

BRTGenKey generates keys using the same algorithm as BRTFrame and BRTRegButton for use in your applications. The information needed to generate the key (and where to put it) is gathered from variables (File or Local) that are set up in the BRTGenKey prompts. These variables need to be present and contain valid information when generating a key in the procedure.

BTRResetSeats - Procedure Extension

BTRResetSeats is an extension template added to a "single procedure app" on the "main" window. It needs access to a dictionary containing the seats file. It will then open the seats file exclusively and reset the seats to 0. Messages will be displayed by the runtime if exclusive access is not available, indicating users have it open. Success will display the window from the app indicating the seats have been reset.

1.2 General Registration Security

Registration Security Issues.

Registration is an attempt to get paid for all your hard work developing an application and getting it ready for market.

BRT Security uses a Developer assigned Seed(1-9999) and has 3 different Developer assigned encryption methods. Only the code for the selected encryption method is generated into the app, and it is generated in 2 different locations. Plus this code is open in the template chain for the developer to add/change encryption methods as necessary further their security.

Many registration programs are not all that secure, but some common sense will get you a long ways towards making your program more secure. BRT is PDS or Pretty Darn Secure when used in accordance with the following tips.

1. Branding

Branding is still the most effective way to encourage the customer to stay registered. Screens and Reports are the prime targets for this, along with a tasteful default branding such as **** Non-Registered Version, Please Register *****

BRT supports @s50 branding and "Registered Company Name" auto-switching between modes. If a company has multiple locations, include the location in the branding. The Company name is included in the Key encryption methods.

2. Registration and Seats Files

2 files are used by BRT, a registration file, and a seats file. You can select your own Files for these, or use the as shipped ones. They are both single record files. For security reasons, these files should not be created by the application. Deleting them would allow new Evaluation periods or additional seats. If the files are deleted, BRT will not allow the program to continue running. With BRT, you ship the 2 files with an "empty record" already created, as BRT will not create a record in an empty file. Replacing the file with a backup or re-installation will either place them back into Evaluation/Demo Mode, or default mode depending on the features you selected in the templates. The files should be encrypted with the "Owner" attribute to prevent unauthorized access.

Computer crashes can sometimes leave the seats file with legal seats already allocated. A demo/example program and template is provided to reset the seats to 0, and exclusive access is required so all users must close the app before running the reset seats utility app.

3. Evaluation Mode (Optional)

BRT supports an Evaluation/Demo mode on initial startup. The timeout in days is determined by template settings in the global template. If you use this feature, make sure you set record limits and use branding to prevent the user from copying the empty Registration file over the top to gain

further access. Do not allow full features in the Evaluation mode. Rather use a timeout Subscription type Key for each user for this type of evaluation. The app goes into Default mode when the Evaluation runs out, or the Registered Key expires.

4. Default Mode

Application Defaults to this mode when not in evaluation or registered mode. Make sure branding is in place and sufficient features are disabled to encourage Registration.

5. Registered Mode

Registered mode will allow all the features represented in the Template settings and Key you generate. This includes Level of features supported, number of network seats, Key Expire Date for subscription, and removes any record limits.

6. Subscription Feature

BRT supports a subscription, or expire date for the Keys generated. This allows you to lease your program for cost advantages as well as increase revenues. It is encrypted into the key, and is hard to defeat. 3 different encryption modes are supported as well as a seed to increase security of this feature.

6. Tamper Date

BRT supports the Tamper Date feature, which will shut down the app if the computer date is setback to try and get around the other supported features. Setting the date to normal will allow the program to resume in the currently registered or expired mode.

7. Time limited Keys.

BRT supports Time Limited Keys, or how long the key is good to register the program. You can set how long the keys are good in the template settings. The Key generated uses today's date, or other date you select in the BRTRegMan program.

8. Seed and encryption methods.

A Developer selected seed code and 3 encryption methods are provided by BRT for additional security in generating the keys. These settings must be transferred to the BRTRegMan program to correctly generate the key for the app. This is easy to do with the Self-Documenting feature included with BRT.

9. Windows Registry entries.

BRT does not create any Registry entries. This is left up to the developer to best regulate any entries into the Windows Registry to prevent the app from being reinstalled, etc. This can be accomplished with a good installer program.

1.3 Getting Started

A few files are included with the template to facilitate an easy startup of adding BRT to your apps.

%ROOT%\3RDPARTY\examples\BRT\BRTSave

BRT.txd	- Dictionary for BRTReg and BRTSeats files. Password('Bo')
BRTReg.TPS	- Registration File, 1 empty record
BRTSEATS.TPS	- Seats File set to 0
BRTseatsABC.txa	- C55 app to reset seats file to 0 with exclusive access
RegAppABC.txa	- C55 ABC Register app procedure using above files
RegAppLEG.txa	- C5 Legacy Register app procedure using above files.

1. Install and Register Templates.
2. Suck BRT.txd into your dictionary, salt to taste, File Names, prefix's, Owner Name for encryption, etc.
3. If you are using FM2 or FM3 from capesoft, exclude the Registration File and Seats File for their templates. Do not let it update these files. It will delete them
4. Install Global BRAppReg extension template and select features, files, etc.
5. Create a register app "form" from your Register File or suck in the appropriate RegApp txa from above.(ABC or Legacy)
6. If you created your own, add the BRTRegButton Control template to the form.
7. Add the BRTFrame extension to the Main Frame in your app. You are now up and running for Registration.! BRTFrame automatically checks the registration key for validity and expiration on

- app startup, and manages Network seats if you have selected that feature.
8. Add the BRTLimits extension template to each procedure that you want to control features and record limits etc. BRTLimits is a multi-purpose template that allows disabling or hiding controls and menu items. BRTLimits can reject the procedure, or manage controls, in non-registered modes(Eval or Default), or based on Registration Feature levels.(0 - 9)
 9. Add the BRTBrand extension template to each procedure where you want to add branding, and add strings using LOC:BRTBrand (variable @s50) to reports and screens. This variable will display your **** Non- Registered Version, Please Register ***** default string that you have chosen in BRAppReg Global extension and replace it with the Registered Company Name when properly Registered.
 10. Now return to the BRTFrame template and click on the ' Document The Settings ' button to create and view a text file documenting all the settings and features you have used in the app. This is a great tool for knowing what you have done, and fine tuning the Registration features for the app. Use this document as well for setting up the Key generation in BTRRegMan.
 11. If you haven't done so, or are not using the above Registration and Seats file, create the 2 files with one empty record each. Make a backup right away, one for testing, and one for shipping with a new app. You will also need to ship the BRTSeats exe or create one of your own in case the end user computer crashes leaving residual seats in the BRTSeats counter file.
 12. Use the handy "feature rich" BTRRegMan application to generate Keys to test and \$ell your new app. You need to set up your Application in the apps (Product) section of the BTRRegMan application with the settings in the documents to properly generate the key, or use the freehand Key tool with settings to match your app.

BRT Ship List with your application.

- Registry File with 1 Empty Record
- Seats File with 1 Record set to 0
- BRTSeats exe or equivalent to reset network seats file after any computer crashes while the app may be running. (Caused by other programs of course, not your app<vbg>).

1.4 FAQ

If you are using **FM2 or FM3 from capesoft**, exclude the Registration File and Seats File for their templates. Do not let it update these files. It will delete them

The templates in BRT will open and close the Registration and Seats files as needed. It is up to the developer to make sure the file definitions are available for use by properly declaring them in the global area or by including them in the procedure schematic tree.

An "&" in a Company Name for the **BTRRegMan email generation feature** will cause the Key information in the Email body to truncate at the point the "&" is encountered. You will have to revert to the Neanderthal method of cut and Paste.<seg>

1.5 Under The Hood

BRT uses several Global Variables.

```
GLO:BRTName          STRING(50)    ! For Branding
GLO:BRTLevel         BYTE          ! 0-9 (9) being all features
GLO:BRTMode          BYTE          ! Eval(1) Default(2) Registered(3)
GLO:BRTSeats         LONG          ! Network Seats
GLO:BRTExpireDate    LONG          ! Evaluation or Registration Expire Date
```

They are loaded on startup of the application with values based on the current registration level. They can be used thru out the app for turning features on and off. These global variables are not exposed in the Field Box in the IDE.

BRTBrand creates a local Variable that is exposed in the Field Box That loads current value of GLO:BRTName.
LOC:BRTBrand STRING(50)

1.6 **Whats New**

BRT Registration Tamer Ver 1.5 March 17, 2005

Changed the template so you can have the BRT Message Box Window as a local procedure so you can modify as you wish.

Version 1.0 April 29, 2004

Ahead of the competition.<g>

1.7 License

License & Copyright Notice

BRT Big Registration Tamer Templates

BRT is copyright 2003 - 2005 by Comsoft7.

None of the files included in this package may be distributed individually or in an altered state without first contacting the author.

BRT is provided without warrantee or guarantee, implied or otherwise. Use at your own risk. Using BRT implies acceptance of this agreement, along with recognition of copyright. Comsoft7 cannot be held liable for any damages or business losses, which may occur as a direct or indirect result of using BRT.

```
#! BRT Templates is the intellectual property of Bo Schmitz -
#! AKA Comsoft7 Copyright 1985-2005
#!
#! The author has developed all template code independently,
#!
#! Licensing is based on SoftVelocity's - one developer can run
#! BRT on more than one machine as long as they are the
#! main user and it is the same copy of Clarion. The developer can
#! run BRT on more than 1 version of Clarion as long as
#! they are upgrades. Therefore, one license required per each
#! Softvelocity license. You can transfer the license to another
#! developer by first consulting the author.
#! Inquire the author for site license's or multiple licenses.
#!
#! Because BRT is all code, please observe the copyright.
#! I made the decision to not Black Box BRT, and you may
#! modify it to suit your purposes. Please advise the Author of
#! any major changes, your needs, and perhaps these changes or needs
#! can be included as features.
#!
#! BRT must not be copied, or modified, in part or whole
#! (except for Personal use), or distributed to another person in
#! any way, without first Contacting the author.
#!
#! The author may be contacted by email at bo@comsoft7.com
#!
#! No warranty of any kind! Use at your own risk.
#!
```

2 BRT Information

This Section of the help contains information on

- File structures of the 2 files required by BRT.
- The Critical Procedures used/needed by BRT
- Applications shipped with BRT
- Extra Txd's and Txa's for Dev Use

2.1 File Structures

2 files are required for BRT.

A registration Information File

This file stores the Registered information for the user, Features they paid for, and the generated Key.

It also has fields to store other critical Data for BRT to calculate Key Validity and check Tampering.

This file is opened on application start to check the Key, and then closed again.

This file is opened to "Register" the Application, and will only be updated if the Key is validated.

A seats file.

This file stores the number of seats in use and is held open by the application.

For Security Reasons

- BRT will not create the files.
- BRT will not add records to a file.
- BRT depends on a 1 record pre-existing File

You will need to install these 2 files, each with an empty record when you install your app.

If you are using **FM2 or FM3 from capesoft**, exclude the Registration File and Seats File for their templates. Do not let it update these files. It will delete them

2.1.1 Reg File

```
BRTReg FILE,DRIVER('TOPSPEED'),OWNER('Bo'),ENCRYPT,PRE(BRT)
---Registry Table
```

Fields

- | | | |
|------------------------|-----------------------------|---|
| 1. Company | STRING(50) | - Company Name For Key and Branding if Used |
| 2. NetworkSeats | SHORT | - Network Seats for Registration |
| 3. Level | BYTE | - Reg Level for Features in Program(0-9)9 |
| | being highest | |
| 4. RegExpireDate | DATE | - Subscription type - Date Reg will Expire |
| 5. RegKey | STRING(35) | - The Generated Key to Register the Program |
| 6. RegisteredOK | BYTE | - Program was successfully |
| | registered.(Internal Use) | |
| 7. LastDateTamperField | DATE | - Checks for Tampering by setting Computer |
| | Date Back (Internal Use) | |
| 8. EvalDateFirstRun | DATE | - Date the Evaluation was first Run(Internal |
| | Use) | |
| 9. RegDateKey | DATE | - Date Key was Genned for Days Key is good to |
| | Register App (Internal Use) | |

2.1.2 Seats File

```
BRTSeats FILE,DRIVER('TOPSPEED'),OWNER('Bo'),ENCRYPT,PRE(BRTS)
---Network Seats File for BRT Registration
```

Field

1. Seats SHORT - Number of Network Users Currently Using Program (Internal Use)

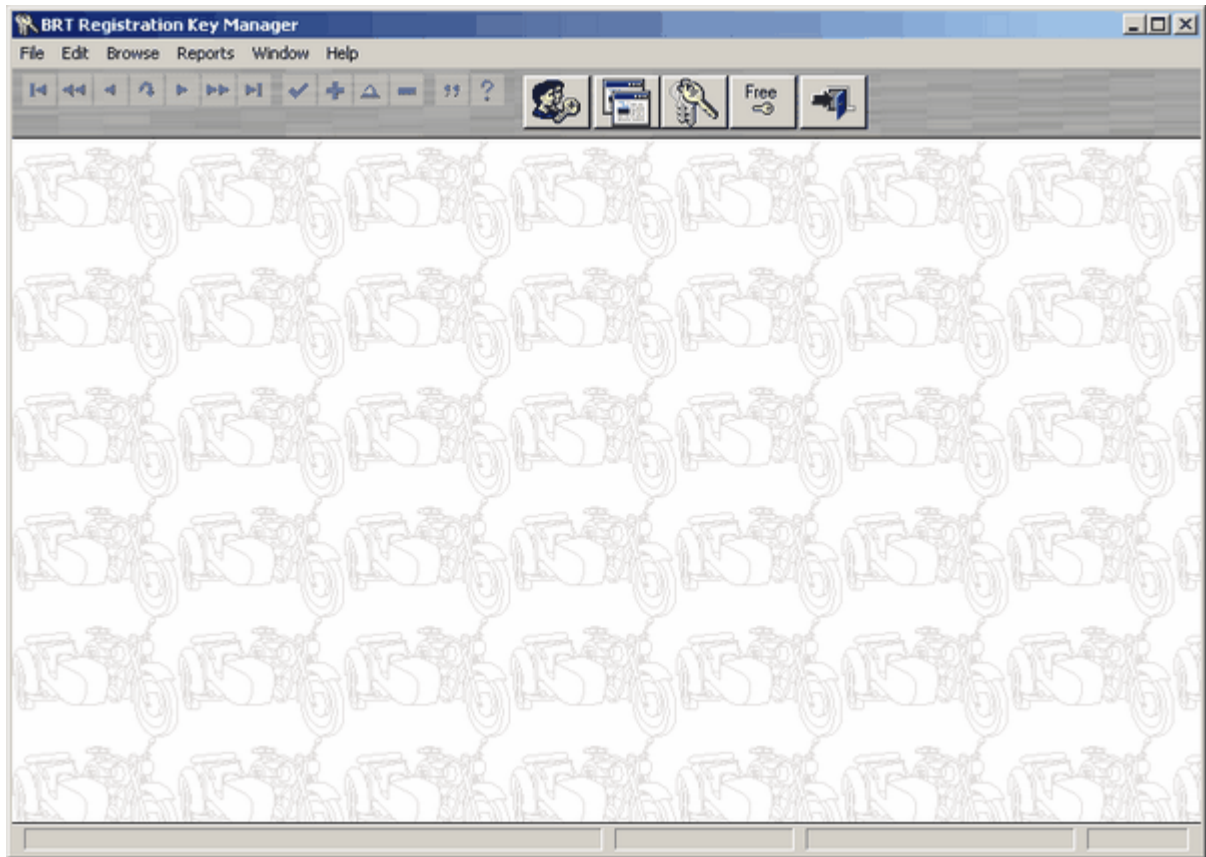
2.2 BRT Applications

The following applications and files were shipped with BRT
They are located in %ROOT%\3RDPARTY\examples\BRT\

1. Invoice.app and .dct - C5 Legacy Example app using BRT templates
%ROOT%\3RDPARTY\examples\BRT\C5Legacy
2. InvoiceA.app and .dct - C55 ABC Example app using BRT templates
%ROOT%\3RDPARTY\examples\BRT\C55ABC
3. BRTRegMan.exe - C55 ABC Registration Manager and Key Generator
%ROOT%\3RDPARTY\examples\BRT\BRTRegMan
4. BRTSeats app, dct, and exe - C55 ABC Reset Network Seats Utility
%ROOT%\3RDPARTY\examples\BRT\BRTSeats
5. Extras - Various txa and txd files to make getting started easier. Empty Reg and Seats files if you use BRT defaults.
%ROOT%\3RDPARTY\examples\BRT\BRTSave
 - BRT.txd - Dictionary for BRTReg and BRTSeats files. Passwords to files ('Bo')
 - BRTReg.TPS - Registration File, 1 empty record
 - BRTSEATS.TPS - Seats File, 1 record set to 0
 - BRTseatsABC.txa - C55 ABC app to reset seats file to 0 with exclusive access
 - GenKey.txa - C55 ABC example procedure to Free Hand generate Keys.
 - Exit.ico - Icon for GenKey procedure.
 - FreeKey.jpg - Wallpaper for GenKey procedure.
 - RegAppABC.txa - C55 ABC Register procedure using above files
 - RegAppLEG.txa - C5 Legacy Register procedure using above files.
 - XtraKeys.txt - Text file containing extra keys for 6 mos for testing Invoice.exe
 - Demo app.

2.2.1 BRTRegMan

BRTRegMan is the Registration Key Manager that ships with BRT Templates.



BRTRegMan Stores Customers, Products (Applications), and generates and stores Keys for customers based on the applications that they purchase.

Changing a BRTCust Record

Customer Information | BRTKeys | Contact

First Name: Dan & Doris
 Last Name: Domenhagen
 Company: D & D's Nursery
 Address: 4500 North State Road 7
 Address:
 City: Margate
 State: FL
 Zip: 33067
 Country:
 Phone: (954) 222-1111 Phone Extension:
 Mobile Phone:
 Home Phone:
 IP Address:
 Fax:
 Web Page:
 email: kwiksys@kwiksystems.net
 Note:

Help

Cancel

OK

Changing a BRTApps Record

Application | BRTKeys

Application: Invoice
 Description: BRT Demo App and Example
 Version: C5 Legacy
 Release Date: Apr 28, 2004

Network Seats
 Registration Levels
 Timed Registration
 Reg Key Time Limited

Days Key Good: 10
 Registration Seed: 1,234

Encryption Method
 1 2 3

Key Prefix: CS7
 Key Suffix: OEM

Help

Cancel

OK

BRTRegMan has 2 Key generation functions, one based on stored Customer and Application

information, and a Free Hand Key generator where you manually enter the details to gen the key.

Generate Key function requires a customer and Application be pre-entered, or enter them on the fly from the lookup procedures. After selecting the customer and application, you can retrieve the last key generated for them if you saved one. Make the required changes, dates, seats, levels, etc for the new Key, and push the Gen Key Button. The new Key will appear in the New key window. If you have a valid email entered for the customer, pushing the Email Key button will create an email for you with pre loaded information in it.

Note: A customer name with an "&" in it will truncate the Key information in the body of the email at the point of the "&" and you will have to revert to the Neanderthal method of "cut and paste" to enter the key into the email<seg>. You can cut and paste the information from the lower right hand window for the email notification.

You can then save the Key for future reference with the Save Key button. The Button enters the Basic Key information into the form for you, and you can add additional information that you need to track. You can purchase the source for BRTRegMan Separately if you wish to modify it, or use the BRTGenKey Button Template to create your own using your customer and Application History files. The **BRTGenKey** button requires prompts to know where the information is stored to calculate the keys.

Generate Key

Free Hand Key Generation

Company Name:

Reg Seats:

Reg Level: **Gen Key**

Reg Expire Date:

Reg Key:

Reg Key Gen Date:

Application Registration Settings

Level Reg Seats Reg Dated Reg Dated Key

Key Prefix: Key Suffix:

BRT Seed: Key Encryp Mode:

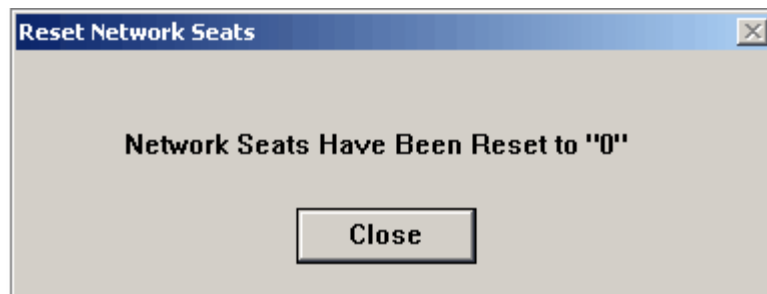
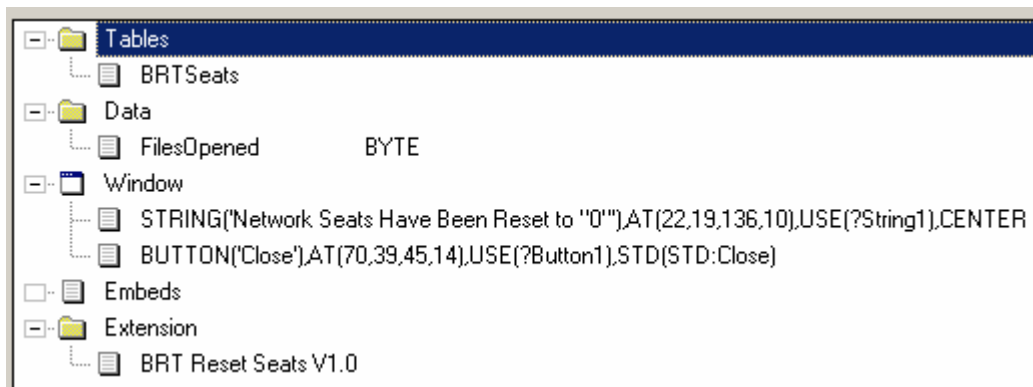
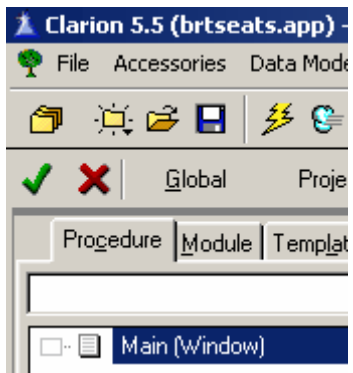
New Key: Comsoft7
 Seats = 10
 Level = 5
 ExpireDate = MAY 3,2005
 Key = CS7-1625-5890-OEM

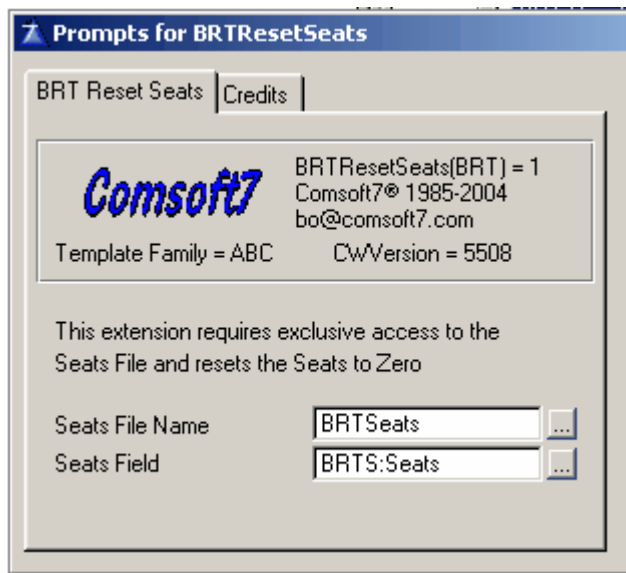
The Free Hand Key Generation Window is just that, you enter the appropriate Application Registration Settings and Customer settings and push the Gen Key Button, and the Key is generated into the Reg Key Field on the form, and all information is generated into the New Key window for cutting and pasting to email, or as required.

The source for the Free Hand Key Generator window is available in C55 ABC format in the %ROOT%\3RDPARTY\examples\BRT\BRTSave directory stored under GenKey.txa - C55 ABC example procedure to Free Hand generate Keys. You can import the txa into your app and Salt to taste. The Funky Wallpaper is included<vbg>

2.2.2 BRTSeats

BRTSeats is a network seat Reset Utility using just a main window and the BRTResetSeats template extension.





2.2.3 Invoice Example and Demo

Invoice.app(C5 Legacy) and Invoicea.app(C55 ABC) Example apps shipped with BRT Taken from the Example Applications shipped with CW2003. They have been modified by adding the BRT templates to them to add Registration Features.

The example includes the BRTSeats.app to reset the BRTSeats.tps file if the main app crashes leaving unused seats in the file.

The Demo is taken from these example apps and contains a directory called BRTSave containing

```
C:\BRTDemo\BRTSave
  BRT.txd           - Dictionary for BRTReg and BRTSeats files.
  BRTReg.TPS       - Registration File, 1 empty record Password('Bo')
  BRTSEATS.TPS    - Seats File, 1 record set to 0 Password('Bo')
  XtraKeys.txt     - Text file containing extra keys for 6 mos for testing Invoice Demo
                    app.

C:\BRTDemo\BRTSavReg
  BRTReg.TPS       - Registration File, Pre-Registered Password('Bo')
```

The demo ships with the Password 'Bo' to the Demo Registration and Seats files so you can change things in the file to see how the app acts under different conditions.

You can get into the seats file to simulate more users by setting the seats up, and see how the app acts, and also try BRTSeats to reset it.

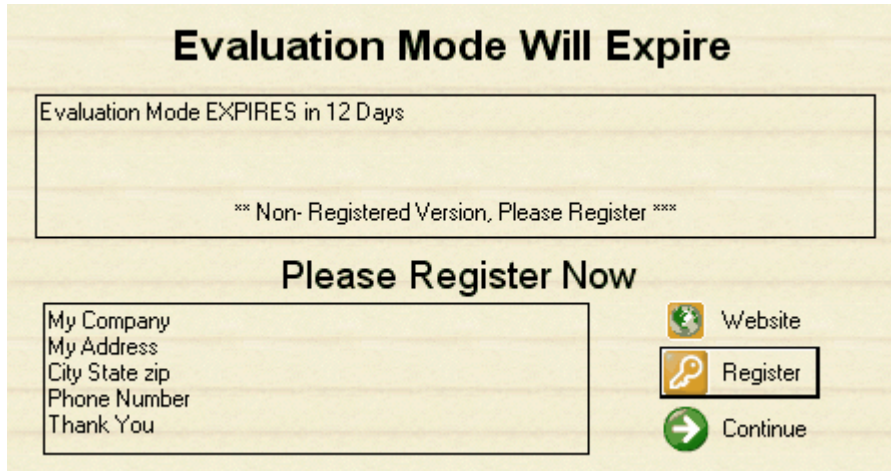
You can simulate Date tamper by setting the Last Date Tamper Field to after today and running the app.

You can change the Eval Date First Run Field to see how the app acts and have it go into Default Mode, etc. The empty files can be copied over the ones in the active directory to restart the Eval/Demo Mode, etc. A pre-registered file is stored in the BRTSavReg Directory.

You can look at the [Sample Docs](#) for this Demo app and see what settings are used in the application for disabling, crippling, and hiding things.

If you are not in the ten day window to test registration for the app from the XtraKeys.txt file, you can manually enter them into the Registration File and Check the RegOK byte to simulate a registered program, and the same way change data to indicate a not good key, etc.

2.3 BRTWindow



The BRTWindow Uses the Messages stored in the [Warning Messages](#) Prompts to display the proper Window.
They are fully configurable by the developer.

Heading refers to the top Line displayed in the window.

Message is the content of the 1st and topmost text box.

The current **Global Branding String** is displayed near the bottom of that textbox. Default or registered Name.

MoreInfo is the Second Heading or Text Line displayed in the Center of the window.

Company Info from the global prompts is displayed in the lower left hand text box.

The **Website** and **Register (Email)** from Company Info is used for the Website button and Register button. They will be hidden if the information is left blank in the Company Info Prompts.

3 Templates

Main App templates

BRAppReg - Global Extension

BRAppReg sets up the Global variables, selects features, encryption variables, and sets the warning messages used by the rest of the application templates. BRAppReg contains Multi-dll selection information to control code generation in BRTFrame for key checking. BRAppReg contains encryption variables used by BRTRegButton to register the app.

BRTFrame - Procedure Extension

BRTFrame will generate the Key checking code on startup and network seats if these items are selected in the BRAppReg and this app is standalone, or part of a Multi-dll app and is the main app. BRTFrame also contains the Self-Documenting Feature (Button) of BRT to document the Registration settings for the application.

BRTLimits - Procedure Extension

BRTLimits is the main "Cripple or Limiting" feature of BRT. BRTLimits allows you to reject procedures, limit records, and change the properties of Window Controls (Hide, disable, etc) depending on Registration "mode" and Feature levels selected in BRAppReg.

BRTBrand - Procedure Extension

BRTBrand creates a LOC:BRTBrand variable @s50 Containing your "Default Not Registered String" Or the Company Name from the Registration file When the app is Properly Registered with a valid Key. This can be used for branding windows and reports to encourage Registration.

BRTRegButton - Control Template (For Registration file update Form)

BRTRegButton automatically turns the form into a single record update form, and will only write to the Registration file if the Key information entered is valid and successful using encryption modes and features from BRAppReg.

Accessory Templates

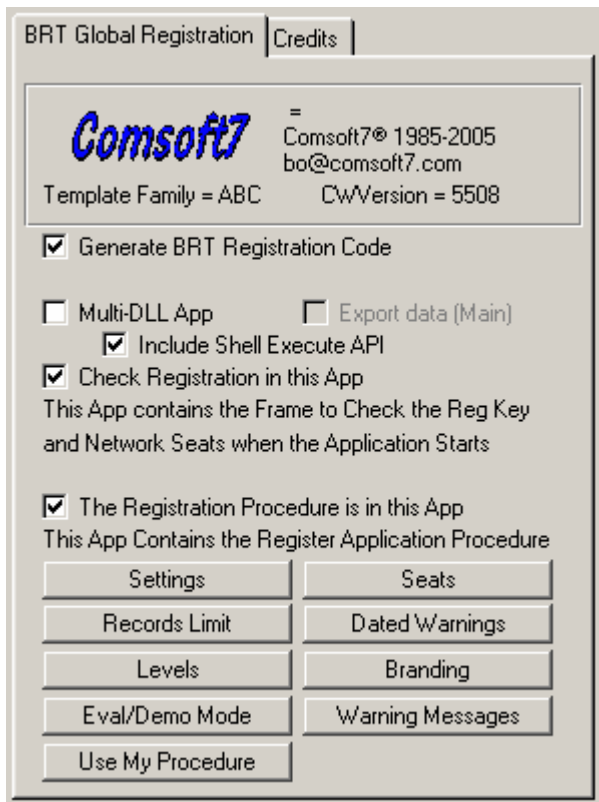
BRTGenKey - Control Template

BRTGenKey generates keys using the same algorithm as BRTFrame and BRTRegButton for use in your applications. The information needed to generate the key (and where to put it) is gathered from variables (File or Local) that are set up in the BRTGenKey prompts. These variables need to be present and contain valid information when generating a key in the procedure.

BTRResetSeats - Procedure Extension

BTRResetSeats is an extension template added to a "single procedure app" on the "main" window. It needs access to a dictionary containing the seats file. It will then open the seats file exclusively and reset the seats to 0. Messages will be displayed by the runtime if exclusive access is not available, indicating users have it open. Success will display the window from the app indicating the seats have been reset.

3.1 BRAppReg - Global



Generate BRT Registration Code Checkbox to enable all BRT code generation in the app.(Uncheck if you suspect BRT Problems)

Multi-DLL App Checkbox, see [Multi-DLL](#) help section for the differences this makes. The BRAppReg Global extension needs to be installed on all DLL's in a multi-DLL project. When installing on Multi-DLL apps in a project, the prompts to fill out are reduced significantly for the apps that do not contain the "Main Frame" or "Register App procedure". We recommend that they both be in the same DLL for that reason. If not, you need to fill out the "Settings" in BRAppReg Global extension EXACTLY the same to Co-ordinate the "Key Validity Code". These settings are also transferred to the BRTRegMan program to generate Valid Keys.

Include Shell Execute API This API call is used by the BRTWindow(Messages and Nag Screen) for going to your website or creating an email to register the Application. Uncheck this box if another template is already generating the API call and you get duplicate errors.

Check Registration in this App will direct the BRTFrame Extension template to generate the code necessary at startup to check for Registration Key Validity and Network Seats (if this option is enabled). Uncheck this box when using with Multi-DLL's and the app does not contain the Main Frame for starting the Application. This will significantly decrease the number of prompts that you are required to fill out (if you also uncheck "The Registration Procedure is in this App" checkbox). This checkbox must be on for a single exe application.

The Registration Procedure is in this App is necessary if you include the procedure (Form) to register the Application in this app. You have to fill out additional prompts in "Settings" needed by the BRTRegButton in the Registration Procedure. Uncheck this box when using with Multi-DLL's and the app does not contain the procedure to register the Application. This will significantly decrease the

number of prompts that you are required to fill out (if you also uncheck "Check Registration in this App" checkbox). This checkbox must be on for a single exe application.

[Settings](#)

[Seats](#)

[Records Limit](#)

[Dated Warnings](#)

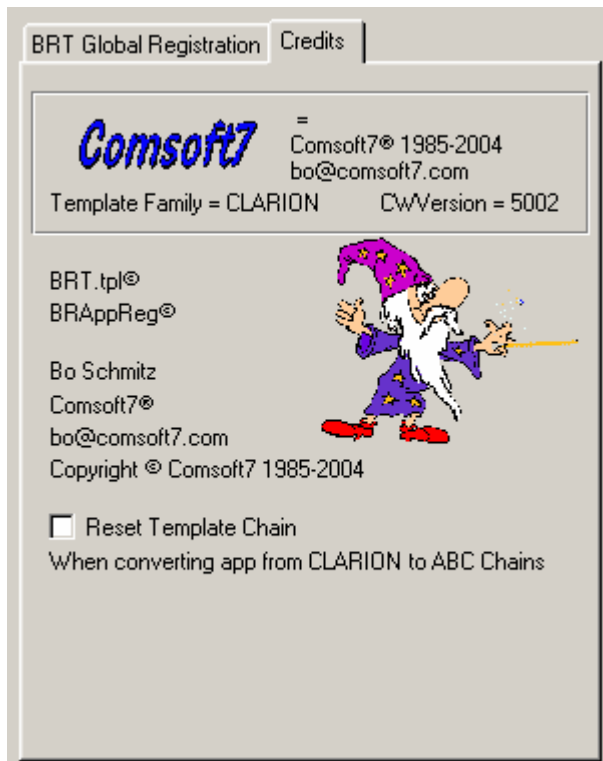
[Levels](#)

[Branding](#)

[Eval/Demo Mode](#)

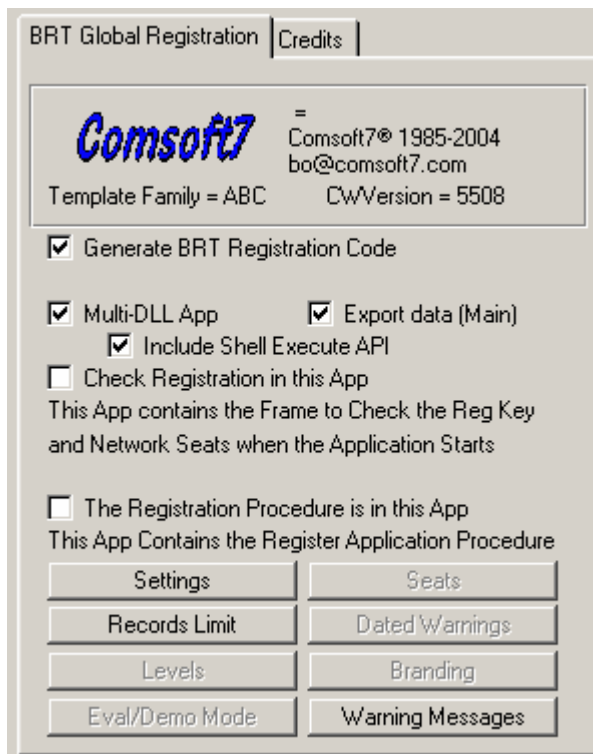
[Warning Messages](#)

[Use My Procedure](#)



Reset Template Chain Checkbox is for when you convert a Clarion Chain Application to ABC chain. The BRT templates will carry over the prompts, and changes you saved, but will need this box checked the first time you compile the app in ABC to reset the template for the new Chain.

3.1.1 Multi-DLL



If this app is part of a multi-dll application, you can select how the Global Data is created.

If you **Export Data (Main)**, it creates the global Data this way

```
GLO:BRTName          STRING(50)    ! For Branding
GLO:BRTLevel         BYTE          ! 0-9 (9) being all features
GLO:BRTMode          BYTE          ! Eval(1) Default(2) Registered(3)
GLO:BRTSeats         LONG          ! Network Seats
GLO:BRTExpireDate    LONG          ! Evaluation or Registration Expire Date
```

If you have not chosen to export Data (this is not The Main Data DLL), then it creates the global data as such.

```
GLO:BRTName          STRING(50),External,Dll ! For Branding
GLO:BRTLevel         BYTE,External,Dll      ! 0-9 (9) being all features
GLO:BRTMode          BYTE,External,Dll      ! Eval(1) Default(2) Registered(3)
GLO:BRTSeats         LONG,External,Dll      ! Network Seats
GLO:BRTExpireDate    LONG,External,Dll      ! Evaluation or Registration Expire Date
```

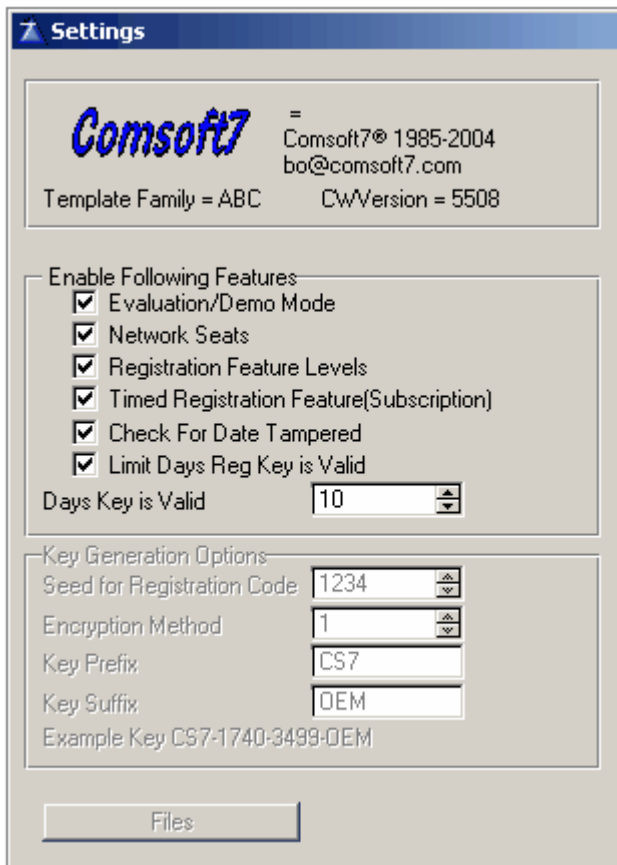
These global variables are not exposed in the Field Box in the IDE.

If the **Check Registration in this App**, and **The Registration Procedure is in this App** are not checked, it significantly reduces the prompts necessary to fill out in the Rest of the Template sections. If one of those boxes are checked, see [BRAppReg-Global](#) for the rest of the settings. When installing on Multi-DLL apps in a project, the prompts to fill out are reduced significantly for the apps that do not contain the "Main Frame" or "Register App procedure". We recommend that they both be in the same DLL for that reason. If not, you need to fill out the "Settings" in BRAppReg Global extension EXACTLY the same to Co-ordinate the "Key Validity Code". These settings are also transferred to the BRTRegMan program to generate Valid Keys.

Reduced Prompt Settings are as follows

[Settings](#)
[Records Limit](#)
[Warning Messages](#)

3.1.1.1 Settings



Select the features enabled in this DLL, they must match the Features in the Main exe app BRAppReg Global template. These settings are used by the BRTLimits template for setting up the Registration Levels, Control and procedure Management.

Also see [Settings](#).

3.1.1.2 Records Limit

Record Limits on a Global Level is only available in ABC apps, and uses the Global File Manager Embeds to Limit the Records. If you are using Clarion template chain or want to limit additional files, use the feature in the [BRTLimits](#) extension template.

Records Limit

Comsoft7 =
Comsoft7® 1985-2004
bo@comsoft7.com

Template Family = ABC CwVersion = 5508

Use File Records Limit
Automatic in "ABC" Chain. Use BRTLimits
For the "Clarion" Chain or Additional "ABC" Limits

File and Records Limit

File: ...

Eval/Demo Mode
Records In Eval Mode

Default Mode
Records In Default Mode

Records Limit

Comsoft7 =
Comsoft7® 1985-2004
bo@comsoft7.com

Template Family = CLARION CwVersion = 5002

Use File Records Limit
Automatic in "ABC" Chain. Use BRTLimits
For the "Clarion" Chain or Additional "ABC" Limits

File and Records Limit

File: ...

Eval/Demo Mode
Records In Eval Mode

Default Mode
Records In Default Mode

3.1.1.3 Warning Messages



NOTE: Do not use any LF/CR in the Main Message Body, as this will cause errors in the code generation.

Default Messages

Limit Records

Heading = Program is Not Registered

Message = You Have Exceeded The Number of Records Allowed in A Non-Registered Mode. Please Register to gain unlimited access.

MoreInfo = Please Register Now

Eval/Demo Mode Proc

Heading = Evaluation Mode

Message = This Feature is not available in Evaluation Mode. Please Register Now to gain access to this feature.

MoreInfo = Please Register Now

Default Mode Procedure

Heading = Default Mode

Message = This Feature is not available in Default Mode. Please Register Now to gain access to this feature.

MoreInfo = Please Register Now

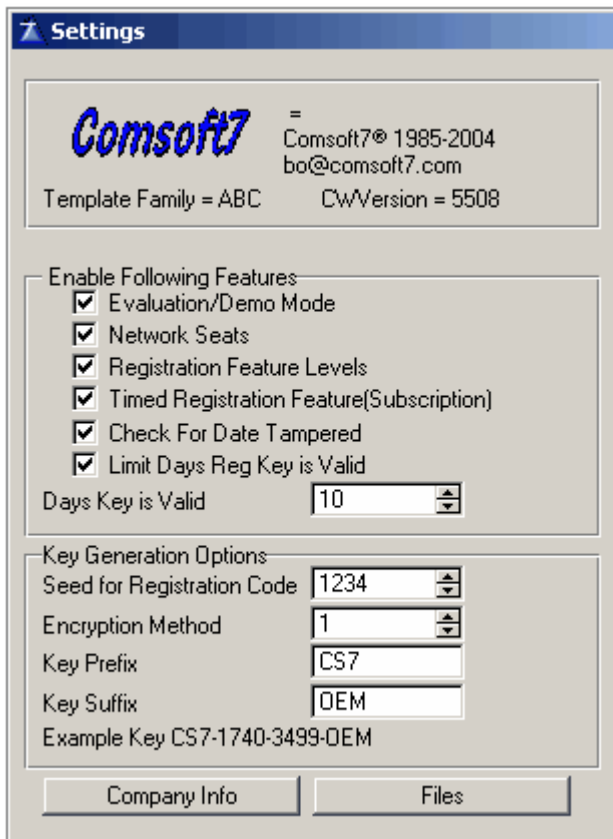
Level Exceeded

Heading = Registration Level Exceeded

Message = This Feature is not available For This Registration Level. Please Register Now to gain access to this feature.

MoreInfo = Please Register Now

3.1.2 Settings



Enable Following Features

Evaluation/Demo Mode

Allows an Evaluation Period (timed or not) on initial installation of the program. If timed, it goes into "Default Mode" when it expires. Default Branding is in effect in Evaluation Mode.

Network Seats

Allows you to control the number of network seats that are allowed to the end user thru

Registration Keys.

Registration Feature Levels

Allows you to create up to 10 levels of features, basic, standard, deluxe, etc. ! 0-9 (9) being all features These are controlled thru the Registration Keys.

Timed Registration Feature(Subscription)

Allows you to issue Keys that have an expiration date. This also allows short term evaluation method that is secure. Application will warn of Key expiration, and go into default mode when they expire. Branding is switched to Registered Company name when valid Key is present, and reverts to the Default Branding string when the Key expires.

Check For Date Tampered

Checks for setting the computer date back to gain extended service. It stores the last date the program was run, and if the current computer date is less than that, BRT will issue a warning message and exit the program.

Limit Days Reg Key is Valid

This feature will limit the number of days that an issued key is valid.

Days Key is Valid

Set the number of days that the Key will be valid.

Key Generation Options

Seed for Registration Code

This number is used for encrypting the information stored in the Registration Key. Values 1 - 9999

Encryption Method

3 encryption methods are available for greater Key security.

Key Prefix

First 3 Characters in the Key generation sequence. Case sensitive.

Key Suffix

Last 3 Characters in the Key generation sequence. Case sensitive.

Example Key CS7-1740-3499-OEM

3.1.2.1 Company Info

➤ **Company Info**

=

Comsoft7® 1985-2004

bo@comsoft7.com

Template Family = ABC

CwVersion = 5508

Company Name	My Company
Address	My Address
City State.Zip	City State zip
Phone Number	Phone Number
Extra Line	Thank You
Your Email	bo@comsoft7.com
Your Email Subject	Invoice Registration
BRT will hide the Email button if no Email Address	
Your Website URL	comsoft7.com
BRT will add http://	
BRT will hide the Register button if no URL is present	

The prompts here are used by [BRTWindow](#) Message and Nag Screen Window.

BRTWindow Will Hide the Web and Register Buttons if not filled in.

3.1.2.2 Files

Files

Comsoft7 =
Comsoft7® 1985-2004
bo@comsoft7.com

Template Family = ABC CWVersion = 5508

Registration File

Registration File Name	BRTReg	...
Registered Name Field	BRT:Company	...
Reg Seats Field	BRT:NetworkSeats	...
Reg Level Field	BRT:Level	...
Reg Exp Date Field	BRT:RegExpireDate	...
Reg Key Field	BRT:RegistrationKey	...
RegOK Field	BRT:RegisteredOK	...
LastDate Tamper Field	BRT>LastDateTamperF	...
Eval Date 1st Run Field	BRT:EvalDateFirstRun	...
RegDateKey was genned	BRT:RegDateKey	...

Above are the prompts for the Registration File used by BRT. They are filled in with the values from the shipped BRTReg file. Hopefully they are self explanatory.

3.1.3 Seats

Seats

Comsoft7 =
Comsoft7® 1985-2004
bo@comsoft7.com

Template Family = ABC CWVersion = 5508

Limit Seats in Evaluation Mode
Seats for Evaluation Mode: 5

Limit Seats in Default Mode
Seats for Default Mode: 2

Seats File Name: BRTSeats

Seats Field: BRTS:Seats

If you have selected the **Network Seats** option in the **Settings**, you can regulate the number of seats in "Evaluation/Demo" and the "Default" Modes of operation for the Application.

You will also need to fill out the prompts for the Seats file in use.

3.1.4 Records Limit

Record Limits on a Global Level is only available in ABC apps, and uses the Global File Manager Embeds to Limit the Records. If you are using Clarion template chain or want to limit additional files, use the feature in the [BRTLimits](#) extension template.

Records Limit

Comsoft7 =
Comsoft7® 1985-2004
bo@comsoft7.com

Template Family = ABC CwVersion = 5508

Use File Records Limit
Automatic in "ABC" Chain, Use BRTLimits
For the "Clarion" Chain or Additional "ABC" Limits

File and Records Limit

File: ...

Eval/Demo Mode
Records In Eval Mode:

Default Mode
Records In Default Mode:

Records Limit

Comsoft7 =
Comsoft7® 1985-2004
bo@comsoft7.com

Template Family = CLARION CwVersion = 5002

Use File Records Limit
Automatic in "ABC" Chain, Use BRTLimits
For the "Clarion" Chain or Additional "ABC" Limits

File and Records Limit

File: ...

Eval/Demo Mode
Records In Eval Mode:

Default Mode
Records In Default Mode:

3.1.5 Dated Warnings

Dated Warnings

Comsoft7 =
Comsoft7® 1985-2004
bo@comsoft7.com

Template Family = ABC CwVersion = 5508

Days to Warn 60

This is the number of days to pop up a warning on Program startup for the end user. The same setting is used by a Registration Expiring, or if you have enabled the Evaluation/Demo feature of BRT.

3.1.6 Levels

Levels

Comsoft7 =
Comsoft7® 1985-2004
bo@comsoft7.com

Template Family = ABC CwVersion = 5508

Limit Level in Evaluation Mode
Level for Evaluation Mode 9

Limit Level in Default Mode
Level for Default Mode 2

If you have chosen Registration Levels of Features Option, You can fill out the Level of Features here for the Evaluation/Demo Mode, and the Default Mode the Application Enters when the Evaluation or Registered Key is expired or not valid. Levels are 0 - 9, with 9 being Highest Level of features.

3.1.7 Branding

Branding

Comsoft7 =
Comsoft7® 1985-2004
bo@comsoft7.com

Template Family = CLARION CwVersion = 5002

Blank the Branding String When Registered

Default/Eval/NoReg Name ersion, Please Register ****

This Registration Name can be used for Branding
Defaults to this if Not Registered or Expired.(GLO:BRTName)

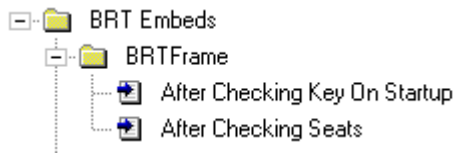
BRT Uses a Global Variable, BRTName STRING(50) for branding the Screens and reports in your application. It works along with the BRTBrand extension template to Easily Brand any screen or report to encourage the User to Register your product. It defaults to the String entered here in the

Default/Eval/NoReg Name prompt. The default string in the template is *****Non Registered Version, Please Register*****

BRT automatically replaces the Default String with the Registered Name in the Registration File when a valid Registration Key is present.

You can also check the **Blank the Branding String When Registered**, but this would encourage copying the program and registration keys.

You can take control of this Branding Variable in the Main Frame of the app in the "After Checking Key" on Startup embeds.



```
GLO:BRTName    STRING(50) ! For Branding
GLO:BRTMode    BYTE      ! Eval(1) Default(2) Registered(3)
```

These global variables are not exposed in the Field Box in the IDE.

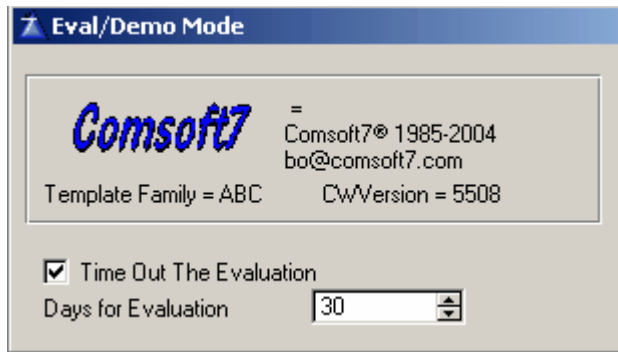
You can examine GLO:BRTMode for value and change GLO:BRTName string to whatever you like for Branding.

If you are branding the main screen with the BRTBrand Template, you will also need to change the LOC:BRTBrand Variable and use Display().

BRTBrand creates a local Variable (LOC:BRTBrand = GLO:BRTName) that is exposed in the Field Box.

```
LOC:BRTBrand    STRING(50)
```

3.1.8 Eval/Demo Mode



These Prompts are for setting up a time out Evaluation/Demo type Application Feature. You can create a permanent evaluation mode until Registered, or set up an Evaluation with additional features, and time them out in **Days for Evaluation**. The program will then go into a Default Mode until registered.

Be advised that when using the **Time out the Evaluation feature**, that if the user copies an empty Registration file over the existing one, they can get another evaluation period. Cripple the evaluation mode accordingly, or don't allow "evaluation" and issue a Dated Subscription type key for an evaluation.

Default Branding will be in effect thru out the Evaluation Period as an encouragement to Register as well.

3.1.9 Warning Messages



These buttons access the Text used by the [BRTWindow](#) Message and Nag Screen.



NOTE: Do not use any LF/CR in the Main Message Body, as this will cause errors in the code generation.

Default Messages are

Can't Open Reg File

Heading = Registration File Error

Message = ERROR Opening Registration File **PROGRAM WILL EXIT** .

MoreInfo = Contact Technical Support

Reg Key Failed

Heading = Registration Key Failed

Message = Registration Key Failed ** RUNTIME KEY FAILURE** Going into Default Mode.

MoreInfo = Entering Default Mode

Reg Will Expire

Heading = Registration Will Expire

Message = Registration EXPIRES in " & (GLO:BRTEexpireDate - TODAY()) & " Days. Please Register now for uninterrupted Service.

MoreInfo = Please Register Now

Reg Has Expired

Heading = Registration Has Expired

Message = Registration has EXPIRED Entering Default Mode. Please Register Now to gain full access to features.

MoreInfo = Default Mode - Please Register Now

Eval Will Expire

Heading = Evaluation Mode Will Expire

Message = Evaluation Mode EXPIRES in ' & (GLO:BRTEexpireDate - TODAY()) & ' Days

MoreInfo = Please Register Now

Eval Has Expired

Heading = Evaluation Mode Has Expired

Message = Evaluation has EXPIRED -- Entering Default Mode. Please Register Now to gain access to all the features.

MoreInfo = Please Register Now

Date Tampered

Heading = Computer Date Has been Tampered

Message = The Date on the Computer has been set back. PROGRAM WILL EXIT. Please Contact Technical Support.

MoreInfo = Contact Technical Support

Can't Open Seats File

Heading = Seats File Error

Message = ERROR Opening Seats File PROGRAM WILL EXIT

MoreInfo = Contact Technical Support

Exceed Net Seats

Heading = Too Many Users Online

Message = You have exceeded the allowable Number of Network Connections Allowed by your Registration. Please increase your Registration Seats.

MoreInfo = Please Register Now

Registration Successful

Heading = Registration Success!

Message = Registration Has Been Successful, and your Registration File has been updated.

MoreInfo = Thank You!

Registration Failed

Heading = Registration FAILED

Message = Program Key Failed, Not Registered. Please check that you entered all Key information correctly or that the Key is not too old and try again.
 MoreInfo = Try Again or Please Register Now!

Limit Records

Heading = Program is Not Registered
 Message = You Have Exceeded The Number of Records Allowed in A Non-Registered Mode.
 Please Register to gain unlimited access.
 MoreInfo = Please Register Now

Eval/Demo Mode Proc

Heading = Evaluation Mode
 Message = This Feature is not available in Evaluation Mode. Please Register Now to gain access to this feature.
 MoreInfo = Please Register Now

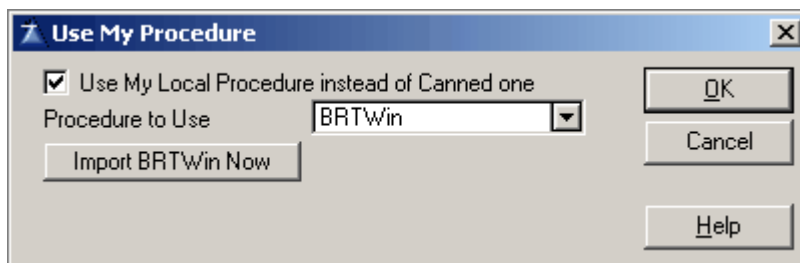
Default Mode Procedure

Heading = Default Mode
 Message = This Feature is not available in Default Mode. Please Register Now to gain access to this feature.
 MoreInfo = Please Register Now

Level Exceeded

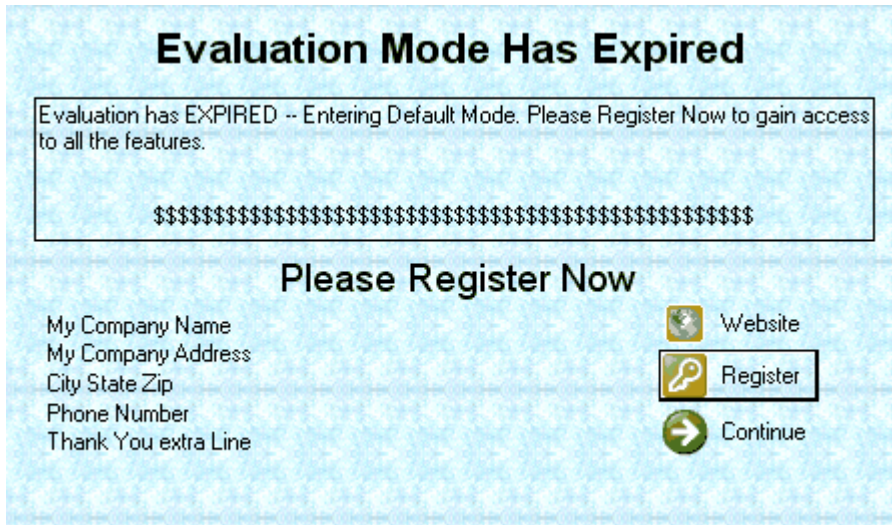
Heading = Registration Level Exceeded
 Message = This Feature is not available For This Registration Level. Please Register Now to gain access to this feature.
 MoreInfo = Please Register Now

3.1.10 Use My Procedure

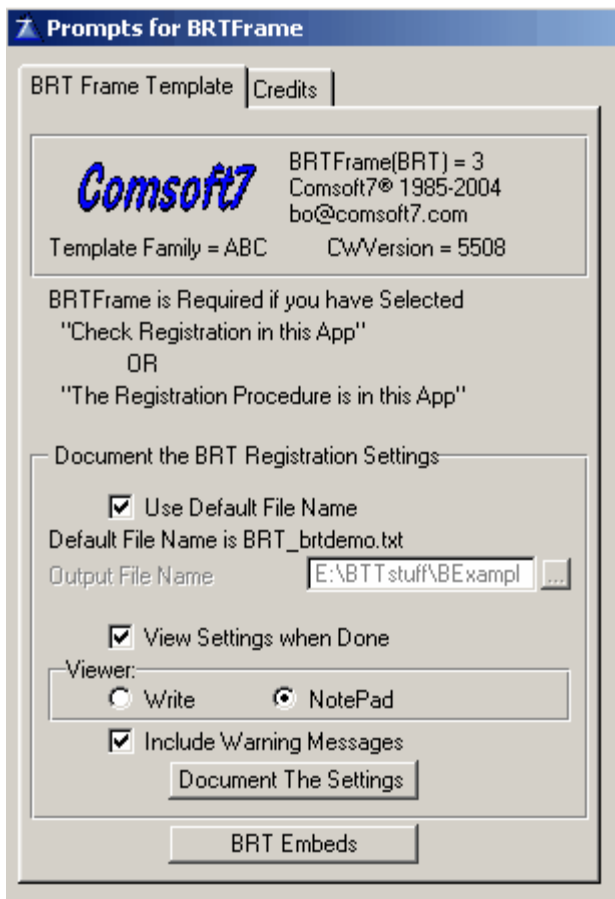


If you want to be able to design your own BRTMessage Window, Check the 'Use My Local Procedure instead of Canned one' Checkbox, and Import the procedure to modify. It will automatically import the correct procedure, ABC or Legacy, and if you Are in the EXE or a DLL when you export it.

It is automatically named BRTWin, but you can rename it if you absolutely must<g>. Make sure the correct procedure is selected here, as 6 parameters are passed to the message window as necessary. You can cause problems if you delete the message areas or buttons on the BRTWin. Rather hide the things you dont want. If you use this option, you must edit the window to reflect your company name, etc. The Company information are strings on the replacement window, and they can be deleted if you want.



3.2 BRTFrame - Frame Extension



The templates in BRT will open and close the Registration and Seats files as needed. It is up to the developer to make sure the file definitions are available for use by properly declaring them in the global area or by including them in the procedure schematic tree.

BRTFrame - Procedure Extension

BRTFrame will generate the Key checking code on startup and network seats if these items are selected in the BRAppReg and this app is standalone, or part of a Multi-dll app and is the main app. BRTFrame also contains the Self-Documenting Feature (Button) of BRT to document the Registration settings for the application.

Document the Settings Button

You can either accept the Default file name, which is " 'BRT_' & Clip(%Application) & '.txt' ", or uncheck the box and select your own. You can also choose to view the file when done. You can select the Program used to view the file created. You can check the box to include the Warning Messages used by the application at the end of the Document. Then click the button to document the BRT Application Security Settings.

3.2.1 Sample Docs

```
*****
Security Settings for invoice.app on MAY  2,2004
*****
Created with BRT.Tpl   Comsoft7(c) 1985-2004
Template Family CLARION           CWVersion = 5002
```

invoice.app is Part of a Multi-DLL Application.
 invoice.app Exports the BRT Global Data.
 BRT will Generate Code to support ShellExecute API
 invoice.app contains the Main Frame to check Registration on Start.
 invoice.app contains the Register App Procedure.

```
Company Name on ***BRTWindow***
  Comsoft7
  2003 13th St S
  La Crosse, WI 54601-6250
  Phone Number
  Thank You
  Email   = bo@comsoft7.com
  Subject = Invoice Demo App
  Website = http://comsoft7.com
```

You have selected the Following Options

```
For Registration Key Generation
  Seed for Reg Code      = 1234
  Encryption Method     = 1
  Key Prefix            = CS7
  Key Suffix            = OEM
  Days Key is Valid    = 10
```

```
Features Selected for Registration
  Evaluation/Demo Mode
  Network Seats
  Registration Levels
  Timed Registration Feature(Subscription)
  Check For Date Tampered
  Limit Days Reg Key is Valid
  Use File Records Limit
  File:                  =
```

```
Other Settings
  Branding                = ** Non- Registered Version, Please
```

Register ***

```
Network Seats
  Limit Seats in Evaluation Mode = 2
  Limit Seats in Default Mode   = 2
  Days to Warn of Expiring      = 60 Days
Registration Levels
  Limit Level in Evaluation Mode = 2
  Limit Level in Default Mode   = 1
Evaluation/Demo Mode
  Time Out The Evaluation       = 30 Days
```

```
**Registration File**      = BRTReg
  Reg Seats Field          = BRT:NetworkSeats
```

```

Reg Level Field          = BRT:Level
  Reg Exp Date Field     = BRT:RegExpireDate
  Reg Key Field          = BRT:RegistrationKey
  RegOK Field            = BRT:RegisteredOK
  LastDate Tamper Field  = BRT:LastDateTamperField
  Eval Date1stRun Field  = BRT:EvalDateFirstRun
  RegDateKey was genned  = BRT:RegDateKey
  BRTReg
FILE,DRIVER('TOPSPEED'),OWNER('Bo'),ENCRYPT,PRE(BRT)

```

```

  **Seats File**          = BRTSeats
  Seats Field             = BRTS:Seats
  BRTSeats
FILE,DRIVER('TOPSPEED'),OWNER('Bo'),ENCRYPT,PRE(BRTS)

```

Individual Procedure And Control Settings

```

=====
Main Procedure
Frame -
=====
-----
**Control Limits
-----
-----
*Evaluation Mode
-----
  Disable(?PrintCUS:StateKey)
-----
*Default Mode
-----
  Disable(?PrintPRO:KeyProductSKU)
  Disable(?PrintCUS:StateKey)
-----
*Levels of Controls
-----
  Less than Level 2
  Disable(?ReportsPrintMailingLabels)
=====
UpdateOrders Procedure
Form -
=====
-----
*Record Limits
-----
  Orders in Eval mode to 5 Records
  Orders in Default mode to 5 Records
=====
UpdateCustomers Procedure
Form -
=====
-----
*Record Limits
-----
  Customers in Eval mode to 5 Records
  Customers in Default mode to 5 Records
=====
UpdateProducts Procedure
Form -
=====
-----

```

*Record Limits

 Products in Eval mode to 5 Records
 Products in Default mode to 5 Records

 ***** Warning Messages *****

Can't Open Reg File ***BRTWindow***
 Heading = Registration File Error
 Message = ERROR Opening Registration File **PROGRAM WILL EXIT** .
 MoreInfo = Contact Technical Support

Reg Key Failed ***BRTWindow***
 Heading = Registration Key Failed
 Message = Registration Key Failed ** RUNTIME KEY FAILURE** Going
 into Default Mode.
 MoreInfo = Entering Default Mode

Reg Will Expire ***BRTWindow***
 Heading = Registration Will Expire
 Message = Registration EXPIRES in ' & (GLO:BRTEexpireDate -
 TODAY()) & ' Days. Please Register now for uninterrupted Service.
 MoreInfo = Please Register Now

Reg Has Expired ***BRTWindow***
 Heading = Registration Has Expired
 Message = Registration has EXPIRED Entering Default Mode. Please
 Register Now to gain full access to features.
 MoreInfo = Default Mode - Please Register Now

Eval Will Expire ***BRTWindow***
 Heading = Evaluation Mode Will Expire
 Message = Evaluation Mode EXPIRES in ' & (GLO:BRTEexpireDate -
 TODAY()) & ' Days
 MoreInfo = Please Register Now

Eval Has Expired ***BRTWindow***
 Heading = Evaluation Mode Has Expired
 Message = Evaluation has EXPIRED -- Entering Default Mode. Please
 Register Now to gain access to all the features.
 MoreInfo = Please Register Now

Date Tampered ***BRTWindow***
 Heading = Computer Date Has been Tampered
 Message = The Date on the Computer has been set back. PROGRAM WILL
 EXIT. Please Contact Technical Support.
 MoreInfo = Contact Technical Support

Can't Open Seats File ***BRTWindow***
 Heading = Seats File Error
 Message = ERROR Opening Seats File PROGRAM WILL EXIT
 MoreInfo = Contact Technical Support

Exceed Net Seats ***BRTWindow***
 Heading = Too Many Users Online
 Message = You have exceeded the allowable Number of Network
 Connections Allowed by your Registration. Please increase your Registration
 Seats.

MoreInfo = Please Register Now

Registration Successful ***BRTWindow***

Heading = Registration Success!

Message = Registration Has Been Successful, and your Registration File has been updated.

MoreInfo = Thank You!

Registration Failed ***BRTWindow***

Heading = Registration FAILED

Message = Program Key Failed, Not Registered. Please check that you entered all Key information correctly or that the Key is not too old and try again.

MoreInfo = Try Again or Please Register Now!

Limit Records ***BRTWindow***

Heading = Program is Not Registered

Message = You Have Exceeded The Number of Records Allowed in A Non-Registered Mode. Please Register to gain unlimited access.

MoreInfo = Please Register Now

Eval/Demo Mode Proc ***BRTWindow***

Heading = Evaluation Mode

Message = This Feature is not available in Evaluation Mode. Please Register Now to gain access to this feature.

MoreInfo = Please Register Now

Default Mode Procedure ***BRTWindow***

Heading = Default Mode

Message = This Feature is not available in Default Mode. Please Register Now to gain access to this feature.

MoreInfo = Please Register Now

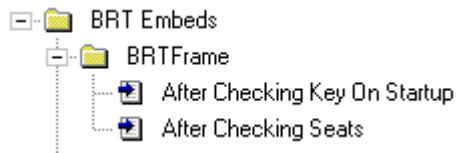
Level Exceeded ***BRTWindow***

Heading = Registration Level Exceeded

Message = This Feature is not available For This Registration Level. Please Register Now to gain access to this feature.

MoreInfo = Please Register Now

3.2.2 Embeds



What you see in source(After checking Key)

```
CLOSE(BRTReg)
LOC:BRTBrand = GLO:BRTName
! Start of "BRT Embeds"
! [Priority 5000]

! End of "BRT Embeds"
! [Priority 4000]
```

What you see in source(After checking Seats)

```
PUT(BRTSeats)
IF ERROR()! = 2 OR ERROR() = 33
  MESSAGE(CLIP(ERROR()) & ' PUT ' & ERRORCODE())
END
END
! Start of "BRT Embeds"
! [Priority 5000]

! End of "BRT Embeds"
```

3.3 BRTLimits - Extension

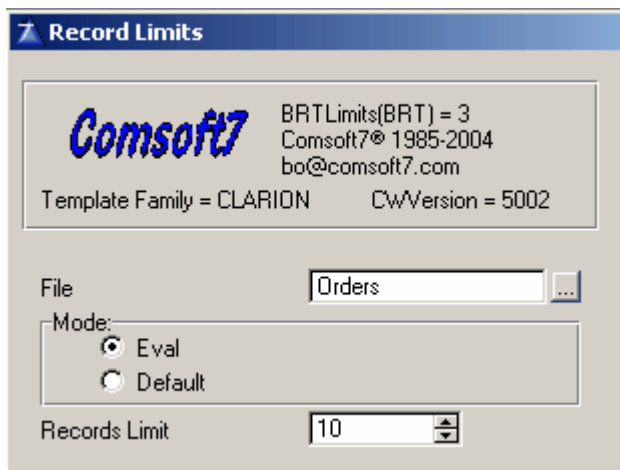
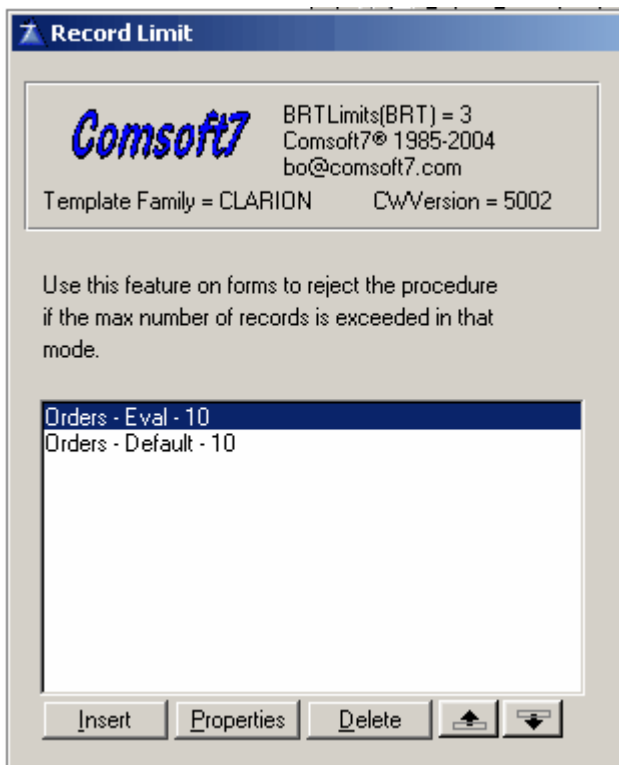
Procedure Limits Section will gracefully exit the procedure and display the appropriate message that you have entered into the BRAppReg Global Extension template.

Record Limit is usually for Update forms to limit them in Evaluation and Default modes.

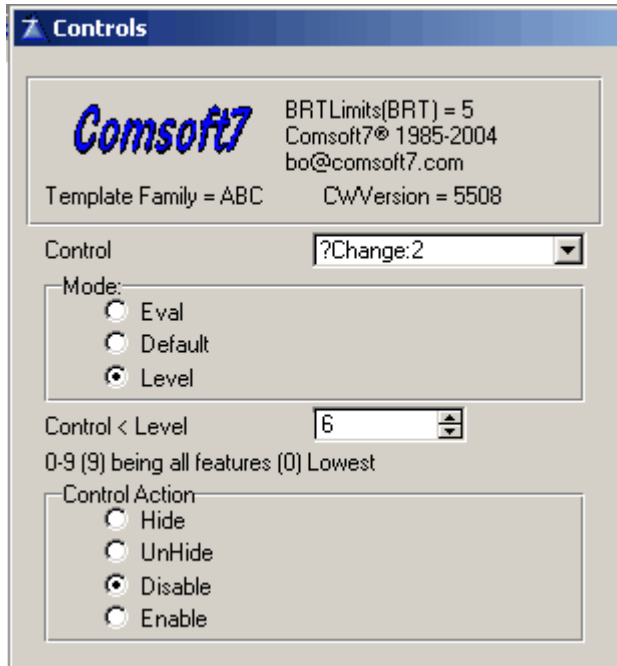
Controls section will Manage Individual controls and Menu items on the window based on your selections.

3.3.1 Record Limit

You can add multiple File Records Limits to each procedure. Usually this is done on a form. Select the File and amount of records allowed in either the Evaluation or Default mode. If the record number is exceeded, the Form will gracefully exit and display the Warning Message you selected in the BRAppReg Global Extension template. The default message is "You Have Exceeded The | Number of Records | Allowed in A Non-Registered Mode"



3.3.2 Controls



Select the control you want to manage.
 Check the Mode for which you want to manage it.
 Select the control level to affect the control if using Registration Levels.
 Select Control action to perform.

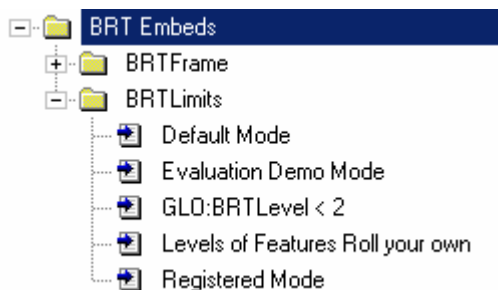
Note: If you disable or hide an update control for a browse box, you have to go into the embeds below your control statement and add additional code to disable the item in the popup menu if it is used.

Brw1.DeleteControl=0

or kill the popup

Brw1.Popup.Kill

3.3.3 Embeds



What you will see in source for the embeds.

```
CASE(GLO:BRTMode)
OF 1  ? Evaluation Demo Mode
      Disable(?PrintCUS:StateKey)
      ? Start of "BRT Embeds"
      ? [Priority 5000]

      ? End of "BRT Embeds"
OF 2  ? Default Mode
      Disable(?PrintPRO:KeyProductSKU)
      Disable(?PrintCUS:StateKey)
      ? Start of "BRT Embeds"
      ? [Priority 5000]

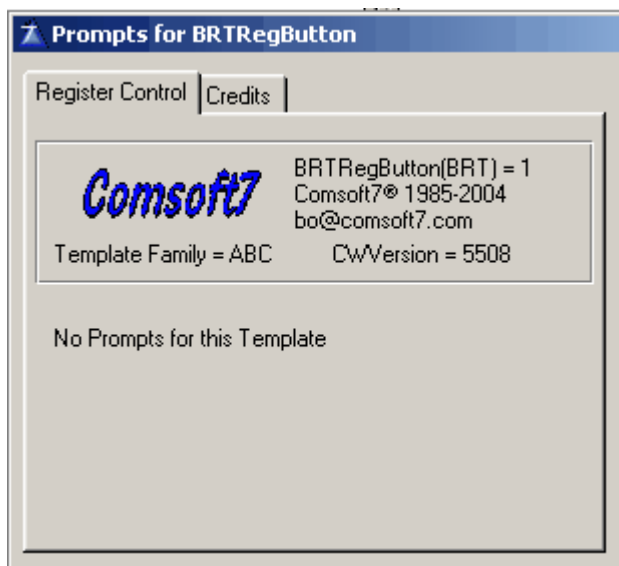
      ? End of "BRT Embeds"
OF 3  ? Registered Mode
      ? Start of "BRT Embeds"
      ? [Priority 5000]

      ? End of "BRT Embeds"
END
IF(GLO:BRTLevel < 2)
  Disable(?ReportsPrintMailingLabels)
  ? Start of "BRT Embeds"
  ? [Priority 5000]

  ? End of "BRT Embeds"
END
      ? Start of "BRT Embeds"
      ? [Priority 5000]

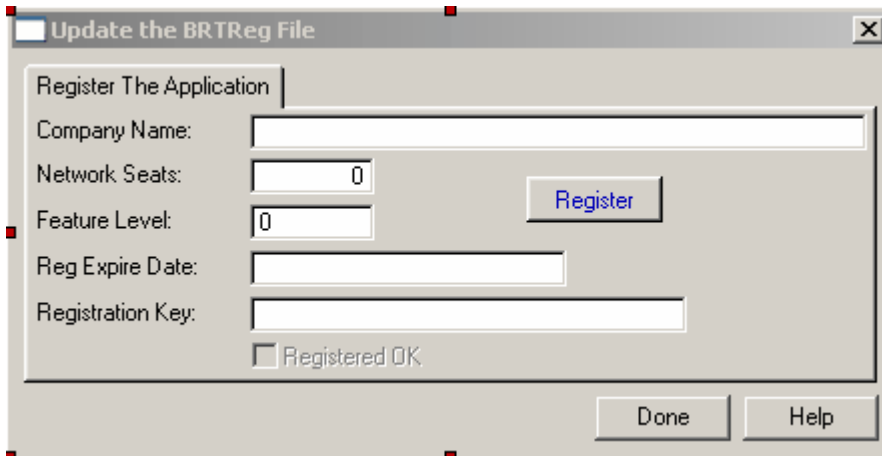
      ? End of "BRT Embeds"
DISPLAY()
? [Priority 9950]
```

3.4 BRTRegButton - Button



BRTRegButton - Control Template (For Registration file update Form) - Button

BRTRegButton automatically turns the form into a single record update form, and will only write to the Registration file if the Key information entered is valid and successful using encryption modes and features from BRAppReg. You can wiz gen a standard form for the Registry file, and then hide the update (OK) button. Rename the Cancel button to Done or Change it to Standard Close. Make sure the internal use fields are not visible in this form, the BRT shipped Registration file had them set for do not populate in the dictionary.

**3.5 BRTGenKey - Button****BRTGenKey** - Control Template - Adds a Gen Key Button to Window

BRTGenKey generates keys using the same algorithm as BRTFrame and BRTRegButton for use in your applications. The information needed to generate the key (and where to put it) is gathered from variables (File or Local) that are set up in the BRTGenKey prompts. These variables need to be present and contain valid information when generating a key in the procedure. This control is used in the BRTRegMan application shipped with the BRT templates. The example below is using all local variables in BRTRegMan.

Gen Key Prompts

Generate Key | Credits

Comsoft7 BRTGenKey(BRT) = 1
Comsoft7® 1985-2004
bo@comsoft7.com

Template Family = ABC CWVersion = 5508

Enable Gen Key Code

App Reg Info To Gen Key

Seed for Reg Code	LOC:BRTSeed	...
Reg Encryption Method	LOC:KeyEncryptionMo	...
Use Network Seats Field	SeatsReg	...
Use Reg Levels Field	LevelReg	...
Use Timed Subscription	DatedReg	...
Use Key Expire Field	DatedKey	...
Key Prefix Field	KeyPrefix	...
Key Suffix Field	KeySuffix	...

Data Fields to Gen Key From

Reg Company Name	LOC:BRTName	...
Network Seats Field	LOC:BRTSeats	...
Reg Levels Field	LOC:BRTLevel	...
Date Reg Expires Field	LOC:BRTExpireDate	...
KeyExp Start Date Field	LOC:BRTKeyGenDate	...
RunTime Reg Key Field	RegKey	...

Additional Defaults

Use Today as default for KeyExpireMode

Use a Default for Date Reg Expires Field

Today plus These Days 365

3.5.1 GenKey Window

Below is a screen shot from the BRTRegMan Application shipped with BRT.

Generate Key

Customer

Company Name:

Reg Seats:

Reg Level:

Reg Expire Date:

Reg Key:

Reg Key Gen Date:

Gen Key

Product

Application Registration Settings

Level Reg Seats Reg Dated Reg Dated Key

Key Prefix: Key Suffix:

BRT Seed: Key Encryp Mode:

Invoice
CW2 Legacy Days Key is Good 10

Last Key:

D & D's Nursery
Seats = 2
Level = 9
ExpireDate = APR 28,2005
Key = CS7-1620-0754-OEM
KeyGenDate = APR 23,2004

Get Last Key

New Key:

D And D's Nursery
Seats = 2
Level = 9
ExpireDate = APR 29,2005
Key = CS7-1617-8020-OEM

Save Key **Email Key**

Information on the Procedure for the above Window.

```
*****
Procedure GenKey
*****
Procedure - GenKey Window Label - Window
Template - Window
First Created - April 27, 2004 At 10:37AM
Last Changed - April 29, 2004 At 7:00AM
*****
```

Local Data for GenKey

```
LOC:BRTName          STRING(50)
TempString           STRING(50)
LOC:BRTLevel         BYTE
LOC:BRTSeats         LONG
LOC:BRTExpireDate   LONG
LOC:BRTSeed          SHORT
LOC:KeyEncryptionMode  BYTE
LOC:BRTKeyGenDate   LONG
DatedReg             BYTE
SeatsReg             BYTE
LevelReg             BYTE
DatedKey             BYTE
RegKey               STRING(35)
KeyPrefix            STRING(3)
KeySuffix            STRING(3)
LOC:BRTTempKey       STRING(50)
LOC:BRTRegKey        STRING(35)
LOC:ProductName      STRING(20)
LOC:Version          STRING(12)
LOC:DaysKeyGood      BYTE
```

```

LastKey          CSTRING(256)
NewKey           CSTRING(256)
-----
      Templates For GenKey
-----
BRTGenKey(BRT)          - 1  CONTROL
-----
      FILES for GenKey
-----
BRTAppCus  -- BRT Applications to Customers
BRTApps    -- BRT Application Files
BRTCust    -- Customer File
BRTKeys    --

```

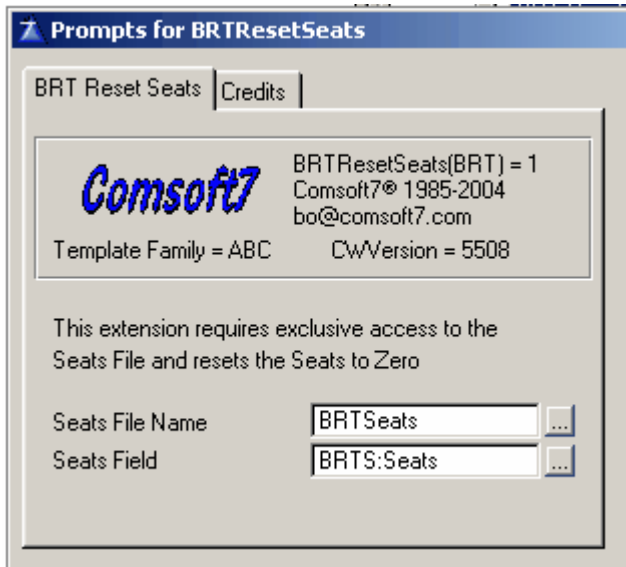
3.6 BRTBrand



BRTBrand - Procedure Extension

BRTBrand creates a LOC:BRTBrand variable @s50 Containing your "Default Not Registered String" Or the Company Name from the Registration file When the app is Properly Registered with a valid Key. This can be used for branding windows and reports to encourage Registration. There is a "Blank When Registered" option in the BRAppReg Global, but its use is not recommended.<g>

3.7 BTRResetSeats



Fill in the Seats File name and the Seats Field.

BTRResetSeats - Procedure Extension

BTRResetSeats is an extension template added to a "single procedure app" on the "main" window. It needs access to a dictionary containing the seats file. It will then open the seats file exclusively and reset the seats to 0. Messages will be displayed by the runtime if exclusive access is not available, indicating users have it open. Success will display the window from the app indicating the seats have been reset.

See [BRTSeats](#) for screen shots.

3.7.1 Reset Window Main

